

GPR87 Rabbit Polyclonal Antibody



CAB15162

Product Information

Size:

20uL, 50uL, 100uL, 200uL

Observed MW:

41kDa

Calculated MW:

41kDa

Applications:

WB

Reactivity:

Human

Protein Background

This gene encodes a G protein-coupled receptor and is located in a cluster of G protein-coupled receptor genes on chromosome 3. The encoded protein has been shown to be overexpressed in lung squamous cell carcinoma (PMID:18057535) and regulated by p53 (PMID:19602589).

Immunogen information

Gene ID:

53836

Uniprot

Q9BY21

Synonyms:

GPR87; FKSG78; GPR95; KPG_002

Antibody Information

Recommended dilutions:

WB 1:500 - 1:2000

Source:

Rabbit

Isotype:

IgG

Purification:

Affinity purification

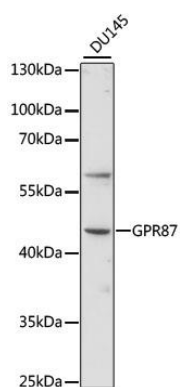
Immunogen:

A synthetic peptide corresponding to a sequence within amino acids 250-350 of human GPR87 (NP_076404.3).

Storage:

Store at -20°C. Avoid freeze / thaw cycles. Buffer: PBS with 0.02% sodium azide, 50% glycerol, pH7.3.

Product Images



Western blot analysis of extracts of DU145 cells, using GPR87 antibody (CAB15162) at 1:1000 dilution. Secondary antibody: HRP Goat Anti-Rabbit IgG (H+L) (CABS014) at 1:10000 dilution. Lysates/proteins: 25ug per lane. Blocking buffer: 3% nonfat dry milk in TBST. Detection: ECL Basic Kit (CABM00020). Exposure time: 90s.