

RIF1 Rabbit Polyclonal Antibody



CAB15167

Product Information

Size:

20uL, 50uL, 100uL, 200uL

Observed MW:

350kDa

Calculated MW:

271kDa/274kDa

Applications:

WB

Reactivity:

Human

Protein Background

This gene encodes a protein that shares homology with the yeast telomere binding protein, Rap1 interacting factor 1. This protein localizes to aberrant telomeres may be involved in DNA repair. Alternate splicing results in multiple transcript variants.

Immunogen information

Gene ID:

55183

Uniprot

Q5UIP0

Synonyms:

RIF1

Antibody Information

Recommended dilutions:

WB 1:500 - 1:2000

Source:

Rabbit

Isotype:

IgG

Purification:

Affinity purification

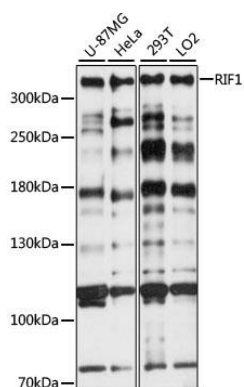
Immunogen:

Recombinant fusion protein containing a sequence corresponding to amino acids 2173-2472 of human RIF1 (NP_060621.3).

Storage:

Store at -20°C. Avoid freeze / thaw cycles. Buffer: PBS with 0.02% sodium azide, 50% glycerol, pH7.3.

Product Images



Western blot analysis of extracts of various cell lines, using RIF1 antibody (CAB15167) at 1:1000 dilution. Secondary antibody: HRP Goat Anti-Rabbit IgG (H+L) (CABS014) at 1:10000 dilution. Lysates/proteins: 25ug per lane. Blocking buffer: 3% nonfat dry milk in TBST. Detection: ECL Basic Kit (CABM00020). Exposure time: 30s.