

ABCF3 Rabbit Polyclonal Antibody



CAB15168

Product Information

Size:

20uL, 50uL, 100uL, 200uL

Observed MW:

85kDa

Calculated MW:

78kDa/79kDa

Applications:

WB IHC

Reactivity:

Human, Mouse, Rat

Protein Background

This gene encodes a member of the ATP-binding cassette (ABC) transporter superfamily. ATP-binding cassette proteins transport various molecules across extra- and intracellular membranes. The protein encoded by this gene displays antiviral effect against flaviviruses. Alternatively spliced transcript variants encoding different isoforms have been found for this gene.

Immunogen information

Gene ID:

55324

Uniprot

Q9NUQ8

Synonyms:

ABCF3; EST201864

Antibody Information

Recommended dilutions:

WB 1:500 - 1:2000 IHC 1:50
- 1:200

Source:

Rabbit

Isotype:

IgG

Purification:

Affinity purification

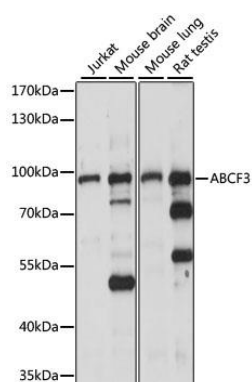
Immunogen:

Recombinant fusion protein containing a sequence corresponding to amino acids 1-200 of human ABCF3 (NP_060828.2).

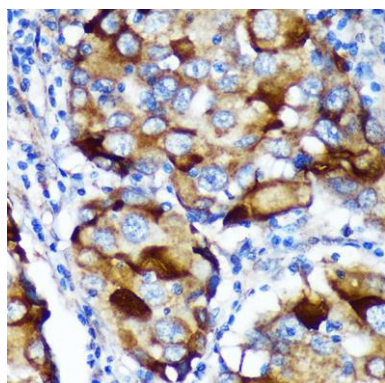
Storage:

Store at -20°C. Avoid freeze / thaw cycles. Buffer: PBS with 0.02% sodium azide, 50% glycerol, pH7.3.

Product Images



Western blot analysis of extracts of various cell lines, using ABCF3 antibody (CAB15168) at 1:1000 dilution. Secondary antibody: HRP Goat Anti-Rabbit IgG (H+L) (CABS014) at 1:10000 dilution. Lysates/proteins: 25ug per lane. Blocking buffer: 3% nonfat dry milk in TBST. Detection: ECL Basic Kit (CABM00020). Exposure time: 30s.



Immunohistochemistry of paraffin-embedded Human breast cancer using ABCF3 Rabbit pAb (CAB15168) at dilution of 1:100 (40x lens).