

SLC17A6 Rabbit Polyclonal Antibody



CAB15177

Product Information

Size:

20uL, 50uL, 100uL, 200uL

Observed MW:

64KDa

Calculated MW:

64kDa

Applications:

WB IF

Reactivity:

Human, Mouse, Rat

Antibody Information

Recommended dilutions:

WB 1:500 - 1:2000 IF 1:50 - 1:200

Source:

Rabbit

Isotype:

IgG

Purification:

Affinity purification

Protein Background

Immunogen information

Gene ID:

57084

Uniprot

Q9P2U8

Synonyms:

SLC17A6; DNPI; VGLUT2

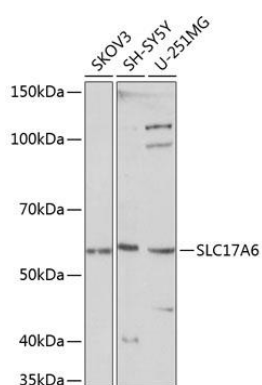
Immunogen:

A synthetic peptide corresponding to a sequence within amino acids 500 to the C-terminus of human SLC17A6 (NP_065079.1).

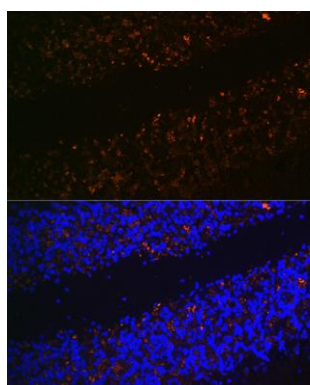
Storage:

Store at -20°C. Avoid freeze / thaw cycles. Buffer: PBS with 0.02% sodium azide, 50% glycerol, pH7.3.

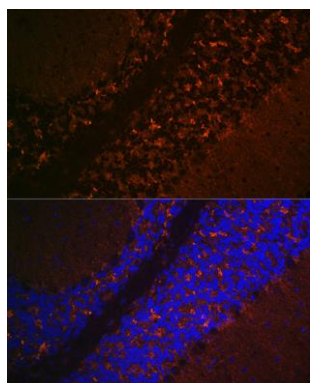
Product Images



Western blot analysis of extracts of various cell lines, using SLC17A6 Polyclonal Antibody (CAB15177) at 1:1000 dilution. Secondary antibody: HRP Goat Anti-Rabbit IgG (H+L) (CABS014) at 1:10000 dilution. Lysates/proteins: 25ug per lane. Blocking buffer: 3% nonfat dry milk in TBST. Detection: ECL Basic Kit (CABM00020). Exposure time: 10s.



Immunofluorescence analysis of rat brain using SLC17A6 Rabbit pAb (CAB15177) at dilution of 1:100 (40x lens). Blue: DAPI for nuclear staining.



Immunofluorescence analysis of mouse brain using SLC17A6 Rabbit pAb (CAB15177) at dilution of 1:100 (40x lens). Blue: DAPI for nuclear staining.