

NQO1 Rabbit Polyclonal Antibody



CAB1518

Product Information

Size:

20uL, 50uL, 100uL, 200uL

Observed MW:

32kDa

Calculated MW:

26kDa/27kDa/30kDa

Applications:

WB IF

Reactivity:

Human, Mouse,

Antibody Information

Recommended dilutions:

WB 1:500 - 1:2000 IF 1:50 - 1:200

Source:

Rabbit

Isotype:

IgG

Purification:

Affinity purification

Protein Background

This gene is a member of the NAD(P)H dehydrogenase (quinone) family and encodes a cytoplasmic 2-electron reductase. This FAD-binding protein forms homodimers and reduces quinones to hydroquinones. This protein's enzymatic activity prevents the one electron reduction of quinones that results in the production of radical species. Mutations in this gene have been associated with tardive dyskinesia (TD), an increased risk of hematotoxicity after exposure to benzene, and susceptibility to various forms of cancer. Altered expression of this protein has been seen in many tumors and is also associated with Alzheimer's disease (AD). Alternate transcriptional splice variants, encoding different isoforms, have been characterized.

Immunogen information

Gene ID:

1728

Uniprot

P15559

Synonyms:

DHQU; DIA4; DTD; NMOR1; NMORI; QR1; NQO1

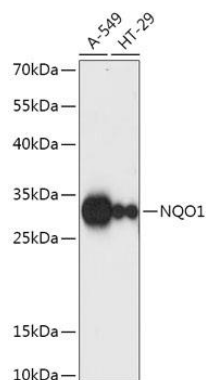
Immunogen:

A synthetic peptide corresponding to a sequence within amino acids 1-50 of human NQO1 (NP_000894.1).

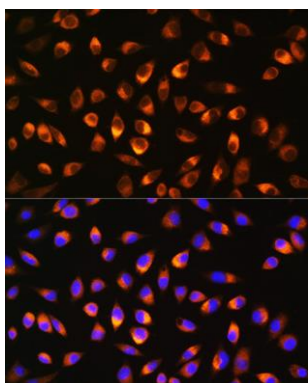
Storage:

Store at -20°C. Avoid freeze / thaw cycles. Buffer: PBS with 0.02% sodium azide, 50% glycerol, pH7.3.

Product Images



Western blot analysis of extracts of various cell lines, using NQO1 antibody (CAB1518) at 1:1000 dilution. Secondary antibody: HRP Goat Anti-Rabbit IgG (H+L) (CABS014) at 1:10000 dilution. Lysates/proteins: 25ug per lane. Blocking buffer: 3% nonfat dry milk in TBST. Detection: ECL Enhanced Kit (CABM00021). Exposure time: 90s.



Immunofluorescence analysis of L929 cells using NQO1 Rabbit pAb (CAB1518) at dilution of 1:100. Blue: DAPI for nuclear staining.