

# MMEL1 Rabbit Polyclonal Antibody



CAB15188

## Product Information

### Size:

20uL, 50uL, 100uL, 200uL

### Observed MW:

99kDa

### Calculated MW:

69kDa/71kDa/89kDa

### Applications:

WB

### Reactivity:

Human

## Antibody Information

### Recommended dilutions:

WB 1:500 - 1:2000

### Source:

Rabbit

### Isotype:

IgG

### Purification:

Affinity purification

## Protein Background

The protein encoded by this gene is a member of the neutral endopeptidase (NEP) or membrane metallo-endopeptidase (MME) family. Family members play important roles in pain perception, arterial pressure regulation, phosphate metabolism and homeostasis. This protein is a type II transmembrane protein and is thought to be expressed as a secreted protein. This gene is expressed mainly in testis with weak expression in the brain, kidney, and heart.

## Immunogen information

### Gene ID:

79258

### Uniprot

Q495T6

### Synonyms:

MMEL1; MMEL2; NEP2; NEPII; NL1; NL2; SEP

### Immunogen:

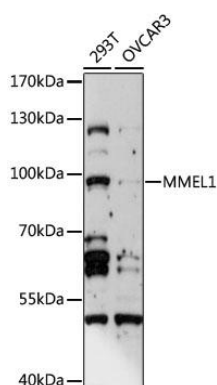
A synthetic peptide corresponding to a sequence within amino acids 350-450 of human MMEL1 (NP\_258428.2).

### Storage:

Store at -20°C. Avoid freeze / thaw cycles. Buffer: PBS with 0.02% sodium azide, 50% glycerol, pH7.3.

## Product Images

---



Western blot analysis of extracts of various cell lines, using MMEL1 antibody (CAB15188) at 1:1000 dilution. Secondary antibody: HRP Goat Anti-Rabbit IgG (H+L) (CABS014) at 1:10000 dilution. Lysates/proteins: 25ug per lane. Blocking buffer: 3% nonfat dry milk in TBST. Detection: ECL Enhanced Kit (CABM00021). Exposure time: 90s.