

ZNF408 Rabbit Polyclonal Antibody



CAB15190

Product Information

Size:

20uL, 50uL, 100uL, 200uL

Observed MW:

Refer to figures

Calculated MW:

78kDa

Applications:

WB IF

Reactivity:

Human

Protein Background

The protein encoded by this gene contains ten tandem zinc fingers and an N-terminal SET domain, so it is likely a DNA binding protein that interacts with other proteins. In adults, the encoded protein is expressed most highly in retina. Consequently, defects in this gene have been associated with familial exudative vitreoretinopathy (FEVR) and retinitis pigmentosa (RP).

Immunogen information

Gene ID:

79797

Uniprot

Q9H9D4

Synonyms:

ZNF408; EVR6; RP72

Antibody Information

Recommended dilutions:

WB 1:500 - 1:2000 IF 1:50 - 1:200

Source:

Rabbit

Isotype:

IgG

Purification:

Affinity purification

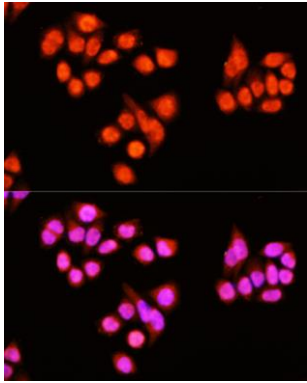
Immunogen:

Recombinant fusion protein containing a sequence corresponding to amino acids 1-240 of human ZNF408 (NP_079017.1).

Storage:

Store at -20°C. Avoid freeze / thaw cycles. Buffer: PBS with 0.02% sodium azide, 50% glycerol, pH7.3.

Product Images



Immunofluorescence analysis of HeLa cells using ZNF408 antibody (CAB15190) at dilution of 1:100 (40x lens). Blue: DAPI for nuclear staining.