

# ARL6 Rabbit Polyclonal Antibody



CAB15198

## Product Information

### Size:

20uL, 50uL, 100uL, 200uL

### Observed MW:

Refer to figures

### Calculated MW:

21kDa

### Applications:

WB IF

### Reactivity:

Human, Mouse

## Protein Background

The protein encoded by this gene belongs to the ARF-like (ADP ribosylation factor-like) sub-family of the ARF family of GTP-binding proteins which are involved in regulation of intracellular traffic. Mutations in this gene are associated with Bardet-Biedl syndrome (BBS). Alternative splicing results in multiple transcript variants of this gene. A vision-specific transcript encoding a different protein has been described (PMID: 20333246).

## Immunogen information

### Gene ID:

84100

### Uniprot

Q9H0F7

### Synonyms:

ARL6; BBS3; RP55

## Antibody Information

### Recommended dilutions:

WB 1:500 - 1:2000 IF 1:50 - 1:200

### Source:

Rabbit

### Isotype:

IgG

### Purification:

Affinity purification

### Immunogen:

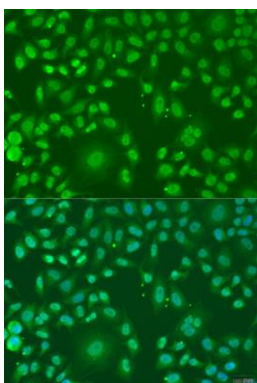
Recombinant fusion protein containing a sequence corresponding to amino acids 1-186 of human ARL6 (NP\_115522.1).

### Storage:

Store at -20°C. Avoid freeze / thaw cycles. Buffer: PBS with 0.02% sodium azide, 50% glycerol, pH7.3.

## Product Images

---



Immunofluorescence analysis of U2OS cells using ARL6 antibody (CAB15198) at dilution of 1:100. Blue: DAPI for nuclear staining.