

ZDHHC18 Rabbit Polyclonal Antibody



CAB15199

Product Information

Size:

20uL, 50uL, 100uL, 200uL

Observed MW:

42kDa

Calculated MW:

27kDa/42kDa

Applications:

WB IHC

Reactivity:

Human, Mouse, Rat

Antibody Information

Recommended dilutions:

WB 1:500 - 1:2000 IHC 1:50
- 1:200

Source:

Rabbit

Isotype:

IgG

Purification:

Affinity purification

Protein Background

Immunogen information

Gene ID:

84243

Uniprot

Q9NUE0

Synonyms:

ZDHHC18; DHHC-18; DHHC18

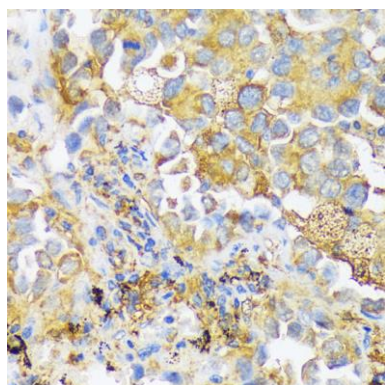
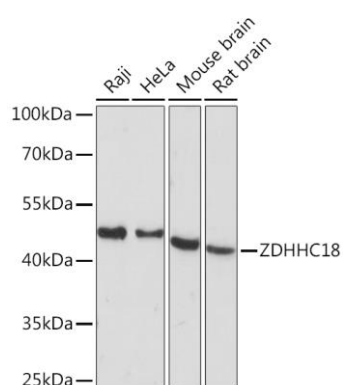
Immunogen:

Recombinant fusion protein containing a sequence corresponding to amino acids 301-388 of human ZDHHC18 (NP_115659.1).

Storage:

Store at -20°C. Avoid freeze / thaw cycles. Buffer: PBS with 0.02% sodium azide, 50% glycerol, pH7.3.

Product Images



Western blot analysis of extracts of various cell lines, using ZDHHC18 Rabbit pAb (CAB15199) at 1:1000 dilution. Secondary antibody: HRP Goat Anti-Rabbit IgG (H+L) (CABS014) at 1:10000 dilution. Lysates/proteins: 25ug per lane. Blocking buffer: 3% nonfat dry milk in TBST. Detection: ECL Basic Kit (CABM00020). Exposure time: 60s.

Immunohistochemistry of paraffin-embedded human lung cancer using ZDHHC18 antibody (CAB15199) at dilution of 1:100 (40x lens).