

ATG4C Rabbit Polyclonal Antibody



CAB15200

Product Information

Size:

20uL, 50uL, 100uL, 200uL

Observed MW:

Calculated MW:

52kDa

Applications:

IF

Reactivity:

Human

Antibody Information

Recommended dilutions:

IF 1:50 - 1:200

Source:

Rabbit

Isotype:

IgG

Purification:

Affinity purification

Protein Background

Autophagy is the process by which endogenous proteins and damaged organelles are destroyed intracellularly. Autophagy is postulated to be essential for cell homeostasis and cell remodeling during differentiation, metamorphosis, non-apoptotic cell death, and aging. Reduced levels of autophagy have been described in some malignant tumors, and a role for autophagy in controlling the unregulated cell growth linked to cancer has been proposed. This gene encodes a member of the autophagin protein family. The encoded protein is also designated as a member of the C-54 family of cysteine proteases. Alternate transcriptional splice variants, encoding the same protein, have been characterized.

Immunogen information

Gene ID:

84938

Uniprot

Q96DT6

Synonyms:

ATG4C; APG4-C; APG4C; AUTL1; AUTL3

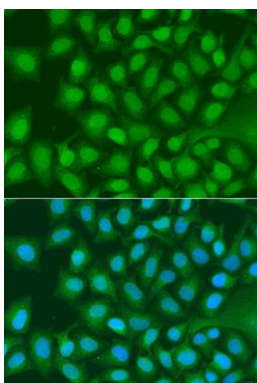
Immunogen:

Recombinant fusion protein containing a sequence corresponding to amino acids 1-200 of human ATG4C (NP_116241.2).

Storage:

Store at -20°C. Avoid freeze / thaw cycles. Buffer: PBS with 0.02% sodium azide, 50% glycerol, pH7.3.

Product Images



Immunofluorescence analysis of U2OS cells using ATG4C antibody (CAB15200) at dilution of 1:100. Blue: DAPI for nuclear staining.