

ALG2 Rabbit Polyclonal Antibody



CAB15203

Product Information

Size:

20uL, 50uL, 100uL, 200uL

Observed MW:

Refer to figures

Calculated MW:

37kDa/47kDa

Applications:

WB IF

Reactivity:

Human

Antibody Information

Recommended dilutions:

WB 1:500 - 1:2000 IF 1:50 - 1:200

Source:

Rabbit

Isotype:

IgG

Purification:

Affinity purification

Protein Background

This gene encodes a member of the glycosyltransferase 1 family. The encoded protein acts as an alpha 1, 3 mannosyltransferase, mannosylating Man(2)GlcNAc(2)-dolichol diphosphate and Man(1)GlcNAc(2)-dolichol diphosphate to form Man(3)GlcNAc(2)-dolichol diphosphate. Defects in this gene have been associated with congenital disorder of glycosylation type 1h (CDG-1h). Alternative splicing results in multiple transcript variants.

Immunogen information

Gene ID:

85365

Uniprot

Q9H553

Synonyms:

ALG2; CDG11; CDG1i; CMS14; CMSTA3; NET38; hALPG2; alpha-1; 3/1

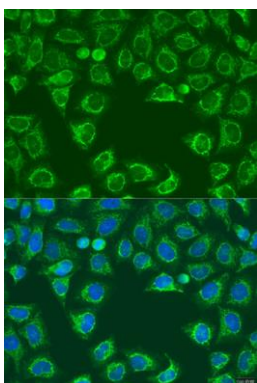
Immunogen:

Recombinant fusion protein containing a sequence corresponding to amino acids 197-416 of human ALG2 (NP_149078.1).

Storage:

Store at -20°C. Avoid freeze / thaw cycles. Buffer: PBS with 0.02% sodium azide, 50% glycerol, pH7.3.

Product Images



Immunofluorescence analysis of U2OS cells using ALG2 antibody (CAB15203) at dilution of 1:100. Blue: DAPI for nuclear staining.