

# LSM11 Rabbit Polyclonal Antibody



CAB15210

---

## Product Information

### Size:

20uL, 50uL, 100uL, 200uL

### Observed MW:

### Calculated MW:

39kDa

### Applications:

IF

### Reactivity:

Human

## Antibody Information

### Recommended dilutions:

IF 1:50 - 1:200

### Source:

Rabbit

### Isotype:

IgG

### Purification:

Affinity purification

## Protein Background

### Immunogen information

#### Gene ID:

134353

#### Uniprot

P83369

#### Synonyms:

LSM11

#### Immunogen:

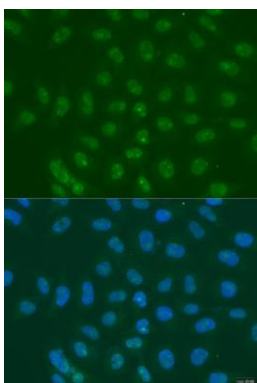
Recombinant fusion protein containing a sequence corresponding to amino acids 131-360 of human LSM11 (NP\_775762.1).

#### Storage:

Store at -20°C. Avoid freeze / thaw cycles. Buffer: PBS with 0.02% sodium azide, 50% glycerol, pH7.3.

## Product Images

---



Immunofluorescence analysis of U2OS cells using LSM11 antibody (CAB15210) at dilution of 1:100. Blue: DAPI for nuclear staining.