

ANO5 Rabbit Polyclonal Antibody



CAB15218

Product Information

Size:

20uL, 50uL, 100uL, 200uL

Observed MW:

107kDa

Calculated MW:

107kDa

Applications:

WB

Reactivity:

Human, Mouse, Rat

Protein Background

This gene encodes a member of the anoctamin family of transmembrane proteins. The encoded protein is likely a calcium activated chloride channel. Mutations in this gene have been associated with gnathodiaphyseal dysplasia. Alternatively spliced transcript variants have been described.

Immunogen information

Gene ID:

203859

Uniprot

Q75V66

Synonyms:

ANO5; GDD1; LGMD2L; TMEM16E

Antibody Information

Recommended dilutions:

WB 1:500 - 1:2000

Source:

Rabbit

Isotype:

IgG

Purification:

Affinity purification

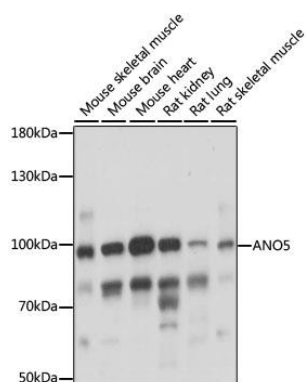
Immunogen:

Recombinant fusion protein containing a sequence corresponding to amino acids 1-300 of human ANO5 (NP_998764.1).

Storage:

Store at -20°C. Avoid freeze / thaw cycles. Buffer: PBS with 0.02% sodium azide, 50% glycerol, pH7.3.

Product Images



Western blot analysis of extracts of various cell lines, using ANO5 antibody (CAB15218) at 1:1000 dilution. Secondary antibody: HRP Goat Anti-Rabbit IgG (H+L) (CABS014) at 1:10000 dilution. Lysates/proteins: 25ug per lane. Blocking buffer: 3% nonfat dry milk in TBST. Detection: ECL Basic Kit (CABM00020). Exposure time: 5s.