

# SLC24A5 Rabbit Polyclonal Antibody



CAB15223

---

## Product Information

### Size:

20uL, 50uL, 100uL, 200uL

### Observed MW:

### Calculated MW:

48kDa/54kDa

### Applications:

IF

### Reactivity:

Human

## Antibody Information

### Recommended dilutions:

IF 1:50 - 1:200

### Source:

Rabbit

### Isotype:

IgG

### Purification:

Affinity purification

## Protein Background

This gene is a member of the potassium-dependent sodium/calcium exchanger family and encodes an intracellular membrane protein with 2 large hydrophilic loops and 2 sets of multiple transmembrane-spanning segments. Sequence variation in this gene has been associated with differences in skin pigmentation.

## Immunogen information

### Gene ID:

283652

### Uniprot

Q71RS6

### Synonyms:

SLC24A5; JSX; NCKX5; OCA6; SHEP4

### Immunogen:

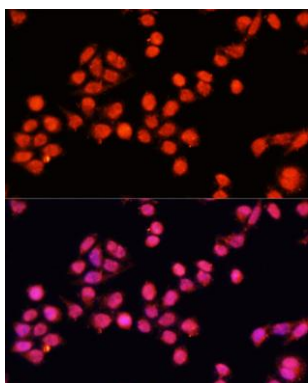
Recombinant fusion protein containing a sequence corresponding to amino acids 220-300 of human SLC24A5 (NP\_995322.1).

### Storage:

Store at -20°C. Avoid freeze / thaw cycles. Buffer: PBS with 0.02% sodium azide, 50% glycerol, pH7.3.

## Product Images

---



Immunofluorescence analysis of HeLa cells using SLC24A5 antibody (CAB15223) at dilution of 1:100 (40x lens). Blue: DAPI for nuclear staining.