

PLA2G4D Rabbit Polyclonal Antibody



CAB15224

Product Information

Size:

20uL, 50uL, 100uL, 200uL

Observed MW:

Calculated MW:

80kDa/91kDa

Applications:

IF

Reactivity:

Human

Antibody Information

Recommended dilutions:

IF 1:50 - 1:200

Source:

Rabbit

Isotype:

IgG

Purification:

Affinity purification

Protein Background

Immunogen information

Gene ID:

283748

Uniprot

Q86XP0

Synonyms:

PLA2G4D; cPLA2delta

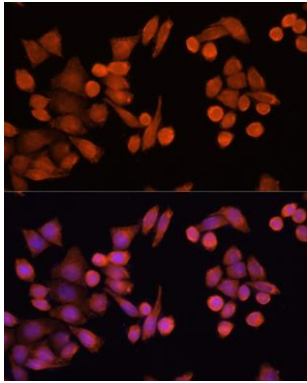
Immunogen:

Recombinant fusion protein containing a sequence corresponding to amino acids 510-680 of human PLA2G4D (NP_828848.3).

Storage:

Store at -20°C. Avoid freeze / thaw cycles. Buffer: PBS with 0.02% sodium azide, 50% glycerol, pH7.3.

Product Images



Immunofluorescence analysis of HeLa cells using PLA2G4D antibody (CAB15224) at dilution of 1:100 (40x lens). Blue: DAPI for nuclear staining.