

SUMO2 Rabbit Polyclonal Antibody



CAB1523

Product Information

Size:

20uL, 50uL, 100uL, 200uL

Observed MW:

16kDa

Calculated MW:

8kDa/10kDa

Applications:

WB IHC

Reactivity:

Human, Mouse, Rat

Antibody Information

Recommended dilutions:

WB 1:500 - 1:2000 IHC 1:50
- 1:200

Source:

Rabbit

Isotype:

IgG

Purification:

Affinity purification

Protein Background

This gene encodes a protein that is a member of the SUMO (small ubiquitin-like modifier) protein family. It functions in a manner similar to ubiquitin in that it is bound to target proteins as part of a post-translational modification system. However, unlike ubiquitin which targets proteins for degradation, this protein is involved in a variety of cellular processes, such as nuclear transport, transcriptional regulation, apoptosis, and protein stability. It is not active until the last two amino acids of the carboxy-terminus have been cleaved off. Numerous pseudogenes have been reported for this gene. Alternate transcriptional splice variants, encoding different isoforms, have been characterized.

Immunogen information

Gene ID:

6613

Uniprot

P61956

Synonyms:

SUMO2; HSMT3; SMT3B; SMT3H2; SUMO3; Smt3A

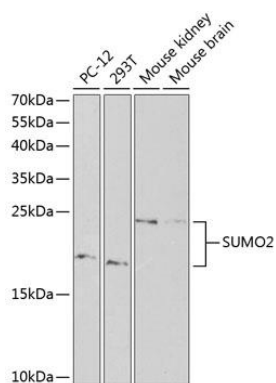
Immunogen:

Recombinant fusion protein containing a sequence corresponding to amino acids 1-95 of human SUMO2 (NP_008868.3).

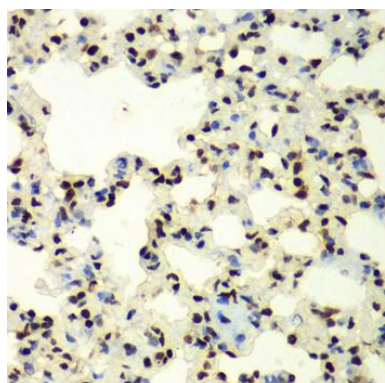
Storage:

Store at -20°C. Avoid freeze / thaw cycles. Buffer: PBS with 0.02% sodium azide, 50% glycerol, pH7.3.

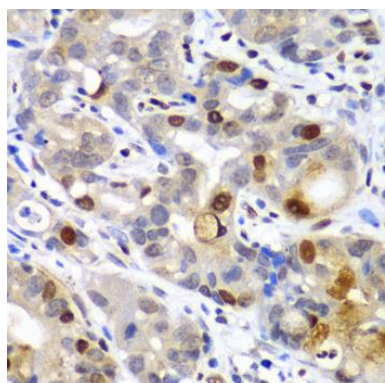
Product Images



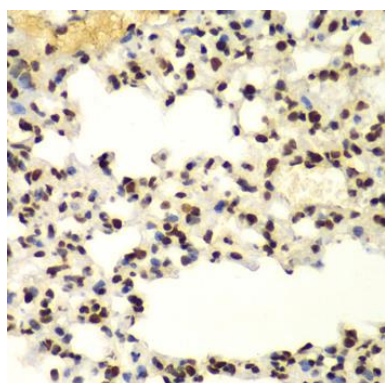
Western blot analysis of extracts of various cell lines, using SUMO2 antibody (CAB1523) at 1:1000 dilution. Secondary antibody: HRP Goat Anti-Rabbit IgG (H+L) (CABS014) at 1:10000 dilution. Lysates/proteins: 25ug per lane. Blocking buffer: 3% nonfat dry milk in TBST.



Immunohistochemistry of paraffin-embedded rat lung using SUMO2 antibody (CAB1523) at dilution of 1:100 (40x lens).



Immunohistochemistry of paraffin-embedded human gastric cancer using SUMO2 antibody (CAB1523) at dilution of 1:100 (40x lens).



Immunohistochemistry of paraffin-embedded mouse lung using SUMO2 antibody (CAB1523) at dilution of 1:100 (40x lens).