

ULK2 Rabbit Polyclonal Antibody



CAB15243

Product Information

Size:

20uL, 50uL, 100uL, 200uL

Observed MW:

113kDa

Calculated MW:

112kDa

Applications:

WB

Reactivity:

Human, Rat

Protein Background

This gene encodes a protein that is similar to a serine/threonine kinase in *C. elegans* which is involved in axonal elongation. The structure of this protein is similar to the *C. elegans* protein in that both proteins have an N-terminal kinase domain, a central proline/serine rich (PS) domain, and a C-terminal (C) domain. The gene is located within the Smith-Magenis syndrome region on chromosome 17. Alternatively spliced transcript variants encoding the same protein have been identified.

Immunogen information

Gene ID:

9706

Uniprot

Q8IYT8

Synonyms:

ULK2; ATG1B; Unc51.2

Antibody Information

Recommended dilutions:

WB 1:500 - 1:2000

Source:

Rabbit

Isotype:

IgG

Purification:

Affinity purification

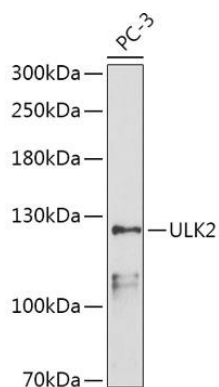
Immunogen:

A synthetic peptide corresponding to a sequence within amino acids 1-100 of human ULK2 (NP_001136082.1).

Storage:

Store at -20°C. Avoid freeze / thaw cycles. Buffer: PBS with 0.02% sodium azide, 50% glycerol, pH7.3.

Product Images



Western blot analysis of extracts of PC-3 cells, using ULK2 antibody (CAB15243) at 1:500 dilution. Secondary antibody: HRP Goat Anti-Rabbit IgG (H+L) (CABS014) at 1:10000 dilution. Lysates/proteins: 25ug per lane. Blocking buffer: 3% nonfat dry milk in TBST. Detection: ECL Enhanced Kit (CABM00021). Exposure time: 90s.