

AFM Rabbit Polyclonal Antibody



CAB15253

Product Information

Size:

20uL, 50uL, 100uL, 200uL

Observed MW:

69kDa

Calculated MW:

69kDa

Applications:

WB

Reactivity:

Rat

Protein Background

This gene is a member of the albumin gene family, which is comprised of four genes that localize to chromosome 4 in a tandem arrangement. These four genes encode structurally-related serum transport proteins that are known to be evolutionarily related. The protein encoded by this gene is regulated developmentally, expressed in the liver and secreted into the bloodstream.

Immunogen information

Gene ID:

173

Uniprot

P43652

Synonyms:

AFM; ALB2; ALBA; ALF; afamin

Antibody Information

Recommended dilutions:

WB 1:200 - 1:2000

Source:

Rabbit

Isotype:

IgG

Purification:

Affinity purification

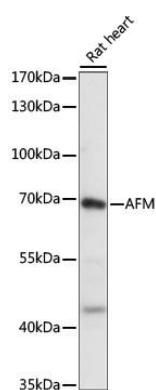
Immunogen:

Recombinant fusion protein containing a sequence corresponding to amino acids 260-599 of human AFM (NP_001124.1).

Storage:

Store at -20°C. Avoid freeze / thaw cycles. Buffer: PBS with 0.02% sodium azide, 50% glycerol, pH7.3.

Product Images



Western blot analysis of extracts of Rat heart, using AFM antibody (CAB15253) at 1:1000 dilution. Secondary antibody: HRP Goat Anti-Rabbit IgG (H+L) (CABS014) at 1:10000 dilution. Lysates/proteins: 25ug per lane. Blocking buffer: 3% nonfat dry milk in TBST. Detection: ECL Basic Kit (CABM00020). Exposure time: 1S.