

CACNA2D1 Rabbit Polyclonal Antibody



CAB15260

Product Information

Size:

20uL, 50uL, 100uL, 200uL

Observed MW:

124kDa

Calculated MW:

121kDa/122kDa/123kDa/124kDa

Applications:

WB

Reactivity:

Human, Mouse

Antibody Information

Recommended dilutions:

WB 1:200 - 1:2000

Source:

Rabbit

Isotype:

IgG

Purification:

Affinity purification

Protein Background

The preproprotein encoded by this gene is cleaved into multiple chains that comprise the alpha-2 and delta subunits of the voltage-dependent calcium channel complex. Calcium channels mediate the influx of calcium ions into the cell upon membrane polarization. Mutations in this gene can cause cardiac deficiencies, including Brugada syndrome and short QT syndrome. Alternate splicing results in multiple transcript variants, some of which may lack the delta subunit portion.

Immunogen information

Gene ID:

781

Uniprot

P54289

Synonyms:

CACNA2D1; CACNA2; CACNL2A; CCHL2A; LINC01112; lncRNA-N3

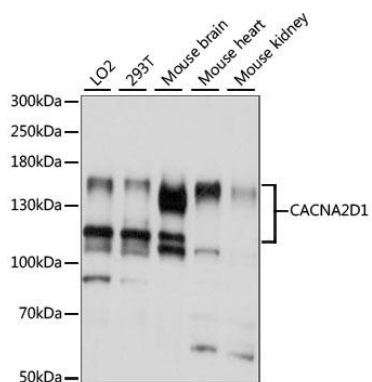
Immunogen:

Recombinant fusion protein containing a sequence corresponding to amino acids 550-800 of human CACNA2D1 (NP_000713.2).

Storage:

Store at -20°C. Avoid freeze / thaw cycles. Buffer: PBS with 0.02% sodium azide, 50% glycerol, pH7.3.

Product Images



Western blot analysis of extracts of various cell lines, using CACNA2D1 antibody (CAB15260) at 1:1000 dilution. Secondary antibody: HRP Goat Anti-Rabbit IgG (H+L) (CABS014) at 1:10000 dilution. Lysates/proteins: 25ug per lane. Blocking buffer: 3% nonfat dry milk in TBST. Detection: ECL Basic Kit (CABM00020). Exposure time: 5S.