

# CENPE Rabbit Polyclonal Antibody



CAB15263

## Product Information

### Size:

20uL, 50uL, 100uL, 200uL

### Observed MW:

270kDa

### Calculated MW:

301kDa/312kDa/316kDa

### Applications:

WB

### Reactivity:

Human, Mouse, Rat

## Antibody Information

### Recommended dilutions:

WB 1:200 - 1:2000

### Source:

Rabbit

### Isotype:

IgG

### Purification:

Affinity purification

## Protein Background

Centrosome-associated protein E (CENPE) is a kinesin-like motor protein that accumulates in the G2 phase of the cell cycle. Unlike other centrosome-associated proteins, it is not present during interphase and first appears at the centromere region of chromosomes during prometaphase. This protein is required for stable spindle microtubule capture at kinetochores which is a necessary step in chromosome alignment during prometaphase. This protein also couples chromosome position to microtubule depolymerizing activity. Alternative splicing results in multiple transcript variants encoding distinct protein isoforms.

## Immunogen information

### Gene ID:

1062

### Uniprot

Q02224

### Synonyms:

CENPE; CENP-E; KIF10; MCPH13; PPP1R61

### Immunogen:

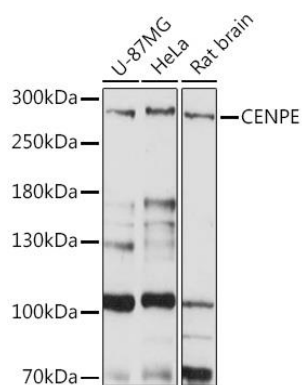
Recombinant fusion protein containing a sequence corresponding to amino acids 2542-2701 of human CENPE (NP\_001804.2).

### Storage:

Store at -20°C. Avoid freeze / thaw cycles. Buffer: PBS with 0.02% sodium azide, 50% glycerol, pH7.3.

## Product Images

---



Western blot analysis of extracts of various cell lines, using CENPE Rabbit pAb (CAB15263) at 1:1000 dilution. Secondary antibody: HRP Goat Anti-Rabbit IgG (H+L) (CABS014) at 1:10000 dilution. Lysates/proteins: 25ug per lane. Blocking buffer: 3% nonfat dry milk in TBST. Detection: ECL Basic Kit (CABM00020). Exposure time: 90s.