

# CTNNA2 Rabbit Polyclonal Antibody



CAB15269

---

## Product Information

### Size:

20uL, 50uL, 100uL, 200uL

### Observed MW:

120kDa

### Calculated MW:

59kDa/65kDa/95kDa/100kDa  
/104kDa/105kDa

### Applications:

WB IHC

### Reactivity:

Mouse, Rat

## Antibody Information

### Recommended dilutions:

WB 1:200 - 1:2000 IHC 1:50  
- 1:200

### Source:

Rabbit

### Isotype:

IgG

### Purification:

Affinity purification

## Protein Background

### Immunogen information

#### Gene ID:

1496

#### Uniprot

P26232

#### Synonyms:

CTNNA2; CAP-R; CAPR; CT114; CTNR

#### Immunogen:

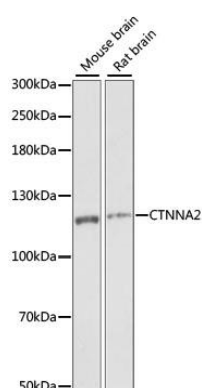
Recombinant fusion protein containing a sequence corresponding to amino acids 150-300 of human CTNNA2 (NP\_004380.2).

#### Storage:

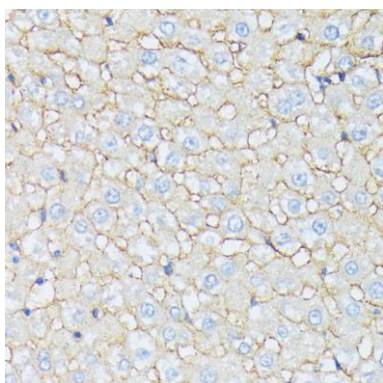
Store at -20°C. Avoid freeze / thaw cycles. Buffer: PBS with 0.02% sodium azide, 50% glycerol, pH7.3.

## Product Images

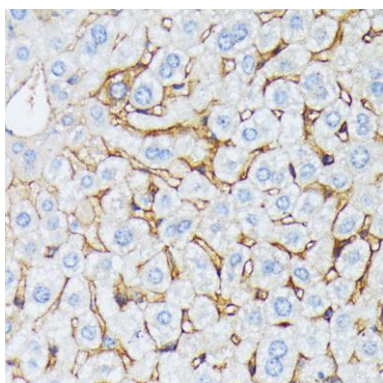
---



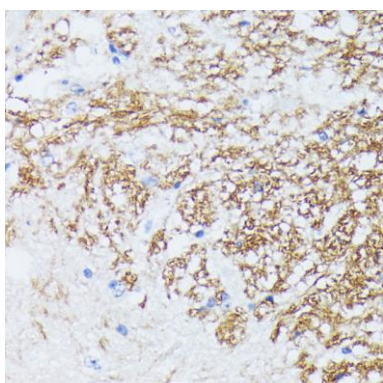
Western blot analysis of extracts of various cell lines, using CTNNA2 antibody (CAB15269) at 1:1000 dilution. Secondary antibody: HRP Goat Anti-Rabbit IgG (H+L) (CABS014) at 1:10000 dilution. Lysates/proteins: 25ug per lane. Blocking buffer: 3% nonfat dry milk in TBST. Detection: ECL Enhanced Kit (CABM00021). Exposure time: 1S.



Immunohistochemistry of paraffin-embedded rat liver using CTNNA2 antibody (CAB15269) at dilution of 1:100 (40x lens).



Immunohistochemistry of paraffin-embedded mouse liver using CTNNA2 antibody (CAB15269) at dilution of 1:100 (40x lens).



Immunohistochemistry of paraffin-embedded mouse spinal cord using CTNNA2 antibody (CAB15269) at dilution of 1:100 (40x lens).