

GTF2E1 Rabbit Polyclonal Antibody



CAB15275

Product Information

Size:

20uL, 50uL, 100uL, 200uL

Observed MW:

60kDa

Calculated MW:

49kDa

Applications:

WB IHC IF

Reactivity:

Human, Mouse, Rat

Antibody Information

Recommended dilutions:

WB 1:200 - 1:2000 IHC 1:50
- 1:200 IF 1:50 - 1:200

Source:

Rabbit

Isotype:

IgG

Purification:

Affinity purification

Protein Background

Immunogen information

Gene ID:

2960

Uniprot

P29083

Synonyms:

GTF2E1; FE; TF2E1; TFII-E

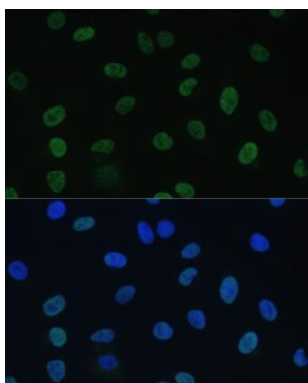
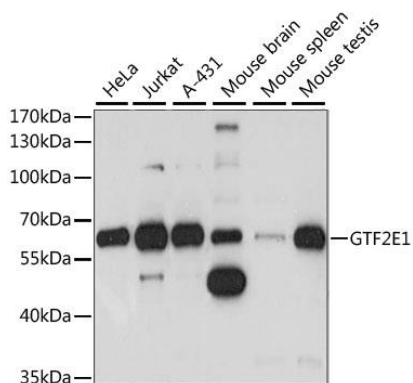
Immunogen:

Recombinant fusion protein containing a sequence corresponding to amino acids 230-439 of human GTF2E1 (NP_005504.2).

Storage:

Store at -20°C. Avoid freeze / thaw cycles. Buffer: PBS with 0.02% sodium azide, 50% glycerol, pH7.3.

Product Images



Western blot analysis of extracts of various cell lines, using GTF2E1 antibody (CAB15275) at 1:1000 dilution. Secondary antibody: HRP Goat Anti-Rabbit IgG (H+L) (CABS014) at 1:10000 dilution. Lysates/proteins: 25ug per lane. Blocking buffer: 3% nonfat dry milk in TBST. Detection: ECL Basic Kit (CABM00020). Exposure time: 5S.

Immunofluorescence analysis of U-2 OS cells using GTF2E1 Polyclonal Antibody (CAB15275) at dilution of 1:100 (40x lens). Blue: DAPI for nuclear staining.