

FOXA1 Rabbit Polyclonal Antibody



CAB15278

Product Information

Size:

20uL, 50uL, 100uL, 200uL

Observed MW:

50KDa

Calculated MW:

45kDa/49kDa

Applications:

WB IHC

Reactivity:

Human, Mouse, Rat

Protein Background

This gene encodes a member of the forkhead class of DNA-binding proteins. These hepatocyte nuclear factors are transcriptional activators for liver-specific transcripts such as albumin and transthyretin, and they also interact with chromatin. Similar family members in mice have roles in the regulation of metabolism and in the differentiation of the pancreas and liver.

Immunogen information

Gene ID:

3169

Uniprot

P55317

Synonyms:

FOXA1; HNF3A; TCF3A

Antibody Information

Recommended dilutions:

WB 1:200 - 1:2000 IHC 1:50
- 1:200

Source:

Rabbit

Isotype:

IgG

Purification:

Affinity purification

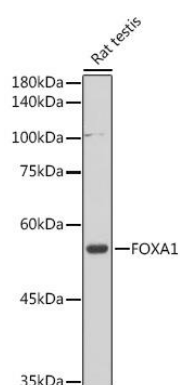
Immunogen:

Recombinant fusion protein containing a sequence corresponding to amino acids 263-472 of human FOXA1 (NP_004487.2).

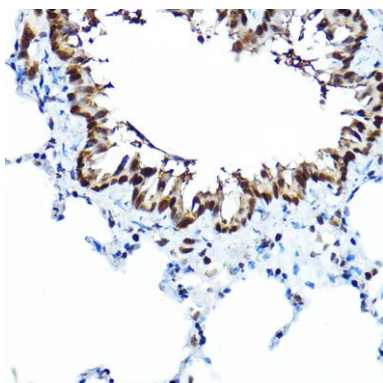
Storage:

Store at -20°C. Avoid freeze / thaw cycles. Buffer: PBS with 0.02% sodium azide, 50% glycerol, pH7.3.

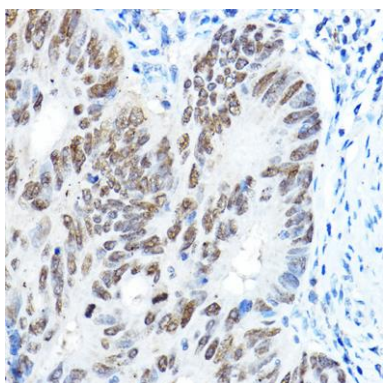
Product Images



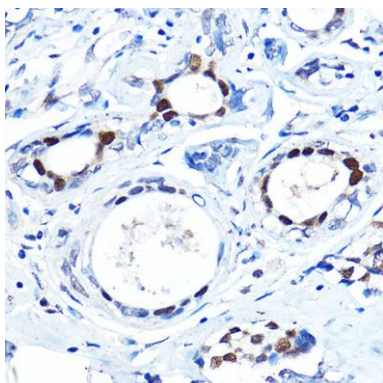
Western blot analysis of extracts of Rat testis, using FOXA1 antibody (CAB15278) at 1:1000 dilution. Secondary antibody: HRP Goat Anti-Rabbit IgG (H+L) (CABS014) at 1:10000 dilution. Lysates/proteins: 25ug per lane. Blocking buffer: 3% nonfat dry milk in TBST. Detection: ECL Basic Kit (CABM00020). Exposure time: 30s.



Immunohistochemistry of paraffin-embedded rat lung using FOXA1 Rabbit pAb (CAB15278) at dilution of 1:100 (40x lens).



Immunohistochemistry of paraffin-embedded human colon carcinoma using FOXA1 Rabbit pAb (CAB15278) at dilution of 1:100 (40x lens).



Immunohistochemistry of paraffin-embedded human breast cancer using FOXA1 Rabbit pAb (CAB15278) at dilution of 1:100 (40x lens).