

IVD Rabbit Polyclonal Antibody



CAB15281

Product Information

Size:

20uL, 50uL, 100uL, 200uL

Observed MW:

42kDa

Calculated MW:

42kDa/46kDa

Applications:

WB IHC

Reactivity:

Human, Mouse, Rat

Protein Background

Isovaleryl-CoA dehydrogenase (IVD) is a mitochondrial matrix enzyme that catalyzes the third step in leucine catabolism. The genetic deficiency of IVD results in an accumulation of isovaleric acid, which is toxic to the central nervous system and leads to isovaleric acidemia. Alternatively spliced transcript variants encoding different isoforms have been found for this gene.

Immunogen information

Gene ID:

3712

Uniprot

P26440

Synonyms:

IVD; ACAD2

Antibody Information

Recommended dilutions:

WB 1:200 - 1:2000 IHC 1:50
- 1:200

Source:

Rabbit

Isotype:

IgG

Purification:

Affinity purification

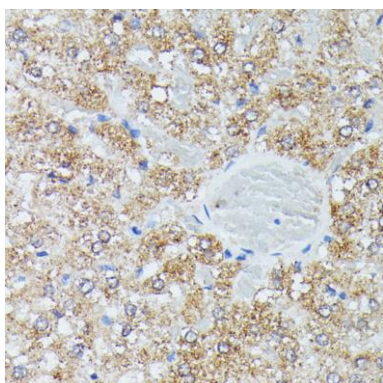
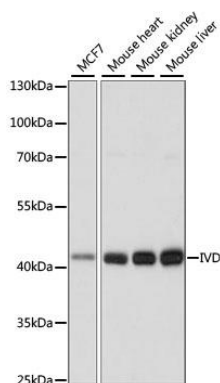
Immunogen:

Recombinant fusion protein containing a sequence corresponding to amino acids 33-200 of human IVD (NP_002216.2).

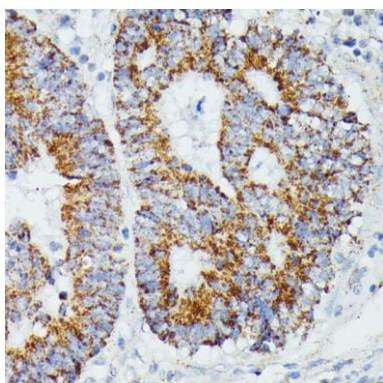
Storage:

Store at -20°C. Avoid freeze / thaw cycles. Buffer: PBS with 0.02% sodium azide, 50% glycerol, pH7.3.

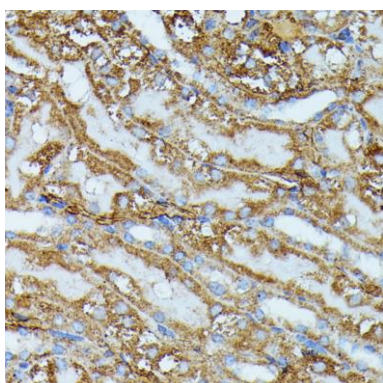
Product Images



Immunohistochemistry of paraffin-embedded rat liver using IVD antibody (CAB15281) at dilution of 1:100 (40x lens).



Immunohistochemistry of paraffin-embedded human colon carcinoma using IVD antibody (CAB15281) at dilution of 1:100 (40x lens).



Immunohistochemistry of paraffin-embedded mouse kidney using IVD antibody (CAB15281) at dilution of 1:100 (40x lens).