

KCNJ15 Rabbit Polyclonal Antibody



CAB15282

Product Information

Size:

20uL, 50uL, 100uL, 200uL

Observed MW:

35kDa

Calculated MW:

42kDa

Applications:

WB IHC

Reactivity:

Human, Mouse, Rat

Protein Background

Potassium channels are present in most mammalian cells, where they participate in a wide range of physiologic responses. The protein encoded by this gene is an integral membrane protein and inward-rectifier type potassium channel. The encoded protein has a greater tendency to allow potassium to flow into a cell rather than out of a cell. Eight transcript variants encoding the same protein have been found for this gene.

Immunogen information

Gene ID:

3772

Uniprot

Q99712

Synonyms:

KCNJ15; IRKK; KIR1.3; KIR4.2

Antibody Information

Recommended dilutions:

WB 1:200 - 1:2000 IHC 1:50
- 1:200

Source:

Rabbit

Isotype:

IgG

Purification:

Affinity purification

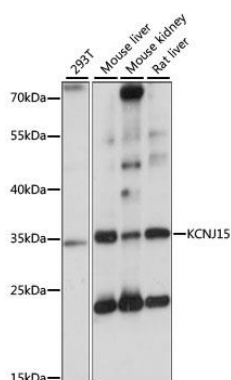
Immunogen:

Recombinant fusion protein containing a sequence corresponding to amino acids 221-375 of human KCNJ15 (NP_002234.2).

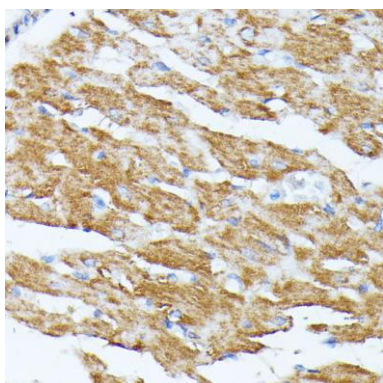
Storage:

Store at -20°C. Avoid freeze / thaw cycles. Buffer: PBS with 0.02% sodium azide, 50% glycerol, pH7.3.

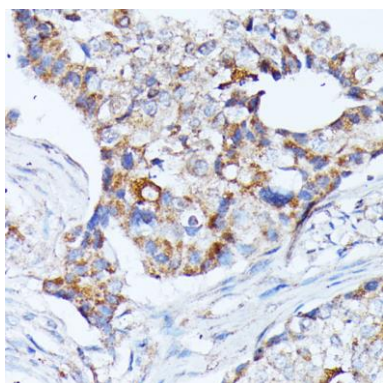
Product Images



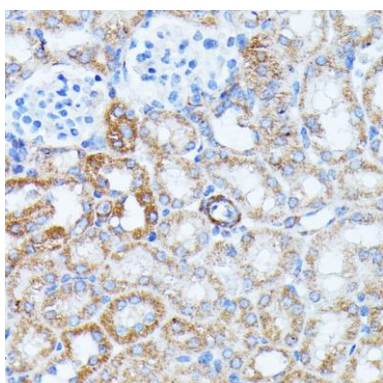
Western blot analysis of extracts of various cell lines, using KCNJ15 antibody (CAB15282) at 1:1000 dilution. Secondary antibody: HRP Goat Anti-Rabbit IgG (H+L) (CABS014) at 1:10000 dilution. Lysates/proteins: 25ug per lane. Blocking buffer: 3% nonfat dry milk in TBST. Detection: ECL Basic Kit (CABM00020). Exposure time: 1s.



Immunohistochemistry of paraffin-embedded rat heart using KCNJ15 antibody (CAB15282) at dilution of 1:100 (40x lens).



Immunohistochemistry of paraffin-embedded human breast cancer using KCNJ15 antibody (CAB15282) at dilution of 1:100 (40x lens).



Immunohistochemistry of paraffin-embedded mouse kidney using KCNJ15 antibody (CAB15282) at dilution of 1:100 (40x lens).