

KIF5B Rabbit Polyclonal Antibody



CAB15284

Product Information

Size:

20uL, 50uL, 100uL, 200uL

Observed MW:

110kDa

Calculated MW:

109kDa

Applications:

WB IHC IF

Reactivity:

Human, Mouse, Rat

Antibody Information

Recommended dilutions:

WB 1:500 - 1:2000 IHC 1:50
- 1:100 IF 1:50 - 1:200

Source:

Rabbit

Isotype:

IgG

Purification:

Affinity purification

Protein Background

Immunogen information

Gene ID:

3799

Uniprot

P33176

Synonyms:

KIF5B; HEL-S-61; KINH; KNS; KNS1; UKHC

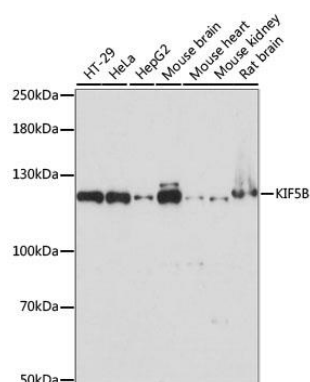
Immunogen:

Recombinant fusion protein containing a sequence corresponding to amino acids 650-770 of human KIF5B (NP_004512.1).

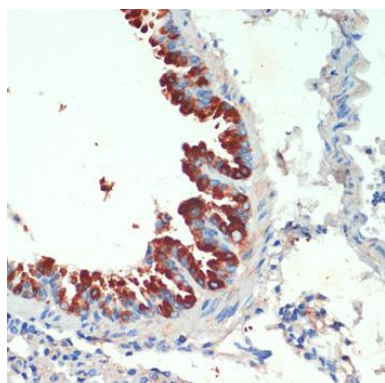
Storage:

Store at -20°C. Avoid freeze / thaw cycles. Buffer: PBS with 0.02% sodium azide, 50% glycerol, pH7.3.

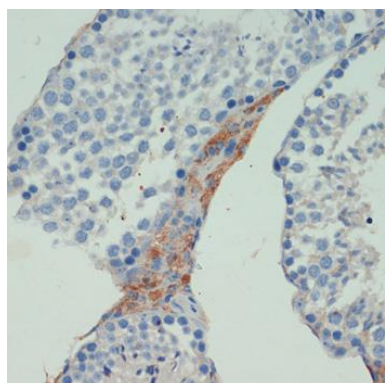
Product Images



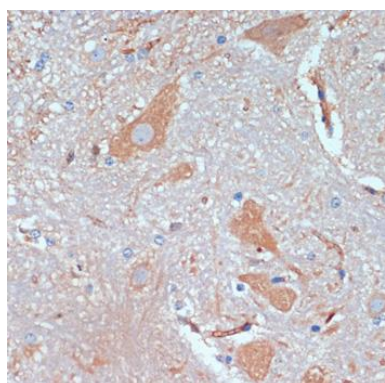
Western blot analysis of extracts of various cell lines, using KIF5B antibody (CAB15284) at 1:1000 dilution. Secondary antibody: HRP Goat Anti-Rabbit IgG (H+L) (CABS014) at 1:10000 dilution. Lysates/proteins: 25ug per lane. Blocking buffer: 3% nonfat dry milk in TBST. Detection: ECL Basic Kit (CABM00020). Exposure time: 60s.



Immunohistochemistry of paraffin-embedded mouse lung using KIF5B antibody (CAB15284) at dilution of 1:200 (40x lens).



Immunohistochemistry of paraffin-embedded mouse testis using KIF5B antibody (CAB15284) at dilution of 1:200 (40x lens).



Immunohistochemistry of paraffin-embedded mouse spinal cord using KIF5B antibody (CAB15284) at dilution of 1:200 (40x lens).