

KIF22 Rabbit Polyclonal Antibody



CAB15285

Product Information

Size:

20uL, 50uL, 100uL, 200uL

Observed MW:

73kDa

Calculated MW:

66kDa/73kDa

Applications:

WB IHC IF

Reactivity:

Human, Mouse

Protein Background

The protein encoded by this gene is a member of the kinesin-like protein family. The family members are microtubule-dependent molecular motors that transport organelles within cells and move chromosomes during cell division. The C-terminal half of this protein has been shown to bind DNA. Studies with the Xenopus homolog suggests its essential role in metaphase chromosome alignment and maintenance. Alternatively spliced transcript variants encoding different isoforms have been found for this gene.

Immunogen information

Gene ID:

3835

Uniprot

Q14807

Synonyms:

KIF22; A-328A3.2; KID; KNSL4; OBP; OBP-1; OBP-2; SEMDJL2

Antibody Information

Recommended dilutions:

WB 1:200 - 1:2000 IHC 1:50
- 1:200 IF 1:50 - 1:200

Source:

Rabbit

Isotype:

IgG

Purification:

Affinity purification

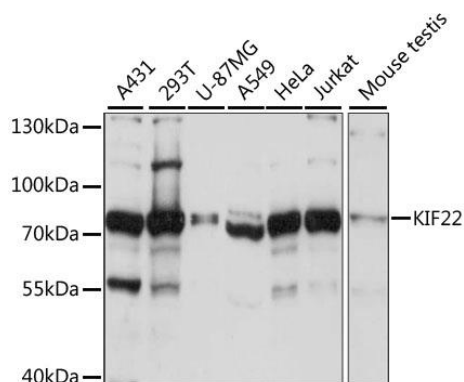
Immunogen:

Recombinant fusion protein containing a sequence corresponding to amino acids 456-665 of human KIF22 (NP_015556.1).

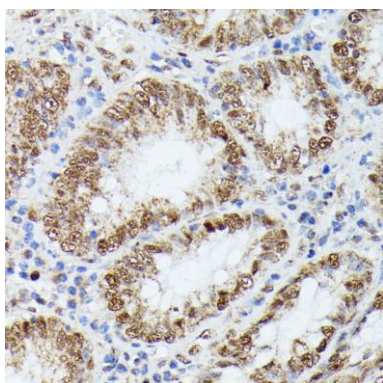
Storage:

Store at -20°C. Avoid freeze / thaw cycles. Buffer: PBS with 0.02% sodium azide, 50% glycerol, pH7.3.

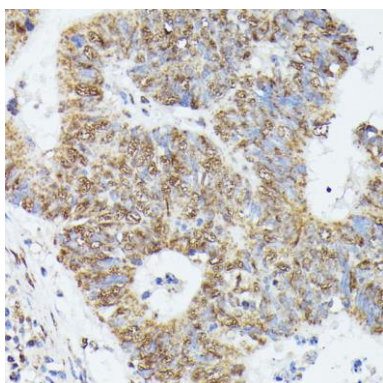
Product Images



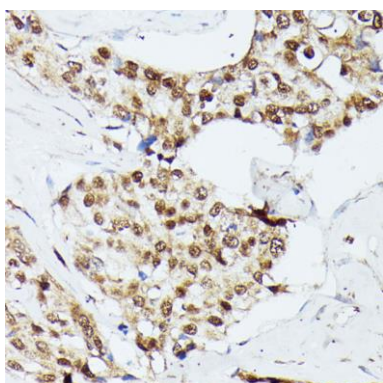
Western blot analysis of extracts of various cell lines, using KIF22 antibody (CAB15285) at 1:1000 dilution. Secondary antibody: HRP Goat Anti-Rabbit IgG (H+L) (CABS014) at 1:10000 dilution. Lysates/proteins: 25ug per lane. Blocking buffer: 3% nonfat dry milk in TBST. Detection: ECL Basic Kit (CABM00020). Exposure time: 3s.



Immunohistochemistry of paraffin-embedded human colon using KIF22 antibody (CAB15285) at dilution of 1:100 (40x lens).



Immunohistochemistry of paraffin-embedded human colon carcinoma using KIF22 antibody (CAB15285) at dilution of 1:100 (40x lens).



Immunohistochemistry of paraffin-embedded human breast cancer using KIF22 antibody (CAB15285) at dilution of 1:100 (40x lens).