

# LTBP1 Rabbit Polyclonal Antibody



CAB15287

---

## Product Information

### Size:

20uL, 50uL, 100uL, 200uL

### Observed MW:

150kDa

### Calculated MW:

147kDa/152kDa/153kDa/186  
kDa

### Applications:

WB

### Reactivity:

Human

## Antibody Information

### Recommended dilutions:

WB 1:200 - 1:2000

### Source:

Rabbit

### Isotype:

IgG

### Purification:

Affinity purification

## Protein Background

The protein encoded by this gene belongs to the family of latent TGF-beta binding proteins (LTBPs). The secretion and activation of TGF-betas is regulated by their association with latency-associated proteins and with latent TGF-beta binding proteins. The product of this gene targets latent complexes of transforming growth factor beta to the extracellular matrix, where the latent cytokine is subsequently activated by several different mechanisms. Alternatively spliced transcript variants encoding different isoforms have been identified.

## Immunogen information

### Gene ID:

4052

### Uniprot

Q14766

### Synonyms:

LTBP1

### Immunogen:

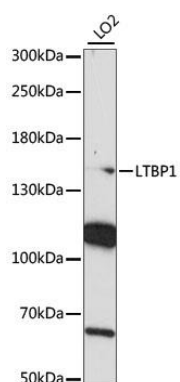
Recombinant fusion protein containing a sequence corresponding to amino acids 1290-1540 of human LTBP1 (NP\_996826.2).

### Storage:

Store at -20°C. Avoid freeze / thaw cycles. Buffer: PBS with 0.02% sodium azide, 50% glycerol, pH7.3.

## Product Images

---



Western blot analysis of extracts of LO2 cells, using LTBP1 antibody (CAB15287) at 1:1000 dilution. Secondary antibody: HRP Goat Anti-Rabbit IgG (H+L) (CABS014) at 1:10000 dilution. Lysates/proteins: 25ug per lane. Blocking buffer: 3% nonfat dry milk in TBST. Detection: ECL Basic Kit (CABM00020). Exposure time: 90s.