

# MYH2 Rabbit Polyclonal Antibody



CAB15292

## Product Information

### Size:

20uL, 50uL, 100uL, 200uL

### Observed MW:

223kDa

### Calculated MW:

79kDa/223kDa

### Applications:

WB IHC IF

### Reactivity:

Human, Mouse, Rat

## Antibody Information

### Recommended dilutions:

WB 1:200 - 1:2000 IHC 1:50  
- 1:200 IF 1:50 - 1:200

### Source:

Rabbit

### Isotype:

IgG

### Purification:

Affinity purification

## Protein Background

Myosins are actin-based motor proteins that function in the generation of mechanical force in eukaryotic cells. Muscle myosins are heterohexamers composed of 2 myosin heavy chains and 2 pairs of nonidentical myosin light chains. This gene encodes a member of the class II or conventional myosin heavy chains, and functions in skeletal muscle contraction. This gene is found in a cluster of myosin heavy chain genes on chromosome 17. A mutation in this gene results in inclusion body myopathy-3. Multiple alternatively spliced variants, encoding the same protein, have been identified.

## Immunogen information

### Gene ID:

4620

### Uniprot

Q9UKX2

### Synonyms:

MYH2; IBM3; MYH2A; MYHSA2; MYHas8; MYPOP; MyHC-2A;  
MyHC-IIa; myosin-2

### Immunogen:

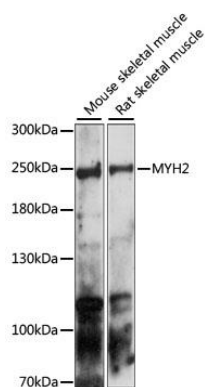
A synthetic peptide corresponding to a sequence within amino acids 550-650 of human MYH2 (NP\_001093582.1).

### Storage:

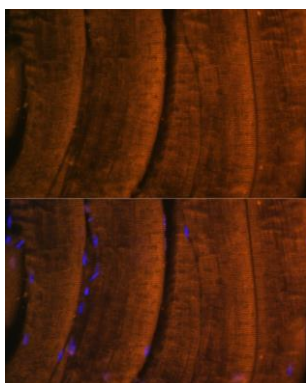
Store at -20°C. Avoid freeze / thaw cycles. Buffer: PBS with 0.02% sodium azide, 50% glycerol, pH7.3.

## Product Images

---



Western blot analysis of extracts of various cell lines, using MYH2 antibody (CAB15292) at 1:1000 dilution. Secondary antibody: HRP Goat Anti-Rabbit IgG (H+L) (CABS014) at 1:10000 dilution. Lysates/proteins: 25ug per lane. Blocking buffer: 3% nonfat dry milk in TBST. Detection: ECL Enhanced Kit (CABM00021). Exposure time: 180s.



Immunofluorescence analysis of mouse skeletal muscle using MYH2 Polyclonal Antibody (CAB15292) at dilution of 1:100 (40x lens). Blue: DAPI for nuclear staining.