

NFIB Rabbit Polyclonal Antibody



CAB15294

Product Information

Size:

20uL, 50uL, 100uL, 200uL

Observed MW:

47kDa

Calculated MW:

22kDa/33kDa/47kDa/53kDa/
55kDa

Applications:

WB

Reactivity:

Human

Antibody Information

Recommended dilutions:

WB 1:200 - 1:2000

Source:

Rabbit

Isotype:

IgG

Purification:

Affinity purification

Protein Background

Immunogen information

Gene ID:

4781

Uniprot

O00712

Synonyms:

NFIB; CTF; HMGIC/NFIB; NF-I/B; NF1-B; NFI-B; NFI-RED; NFIB2;
NFIB3

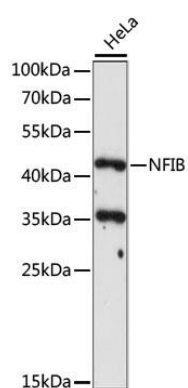
Immunogen:

A synthetic peptide corresponding to a sequence within amino acids 300 to the C-terminus of human NFIB (NP_005587.2).

Storage:

Store at -20°C. Avoid freeze / thaw cycles. Buffer: PBS with 0.02% sodium azide, 50% glycerol, pH7.3.

Product Images



Western blot analysis of extracts of HeLa cells, using NFIB antibody (CAB15294) at 1:1000 dilution. Secondary antibody: HRP Goat Anti-Rabbit IgG (H+L) (CABS014) at 1:10000 dilution. Lysates/proteins: 25ug per lane. Blocking buffer: 3% nonfat dry milk in TBST. Detection: ECL Basic Kit (CABM00020). Exposure time: 120s.