

# PLS1 Rabbit Polyclonal Antibody



CAB15303

## Product Information

### Size:

20uL, 50uL, 100uL, 200uL

### Observed MW:

70kDa

### Calculated MW:

70kDa

### Applications:

WB IHC

### Reactivity:

Human, Mouse, Rat

## Protein Background

Plastins are a family of actin-binding proteins that are conserved throughout eukaryote evolution and expressed in most tissues of higher eukaryotes. In humans, two ubiquitous plastin isoforms (L and T) have been identified. The protein encoded by this gene is a third distinct plastin isoform, which is specifically expressed at high levels in the small intestine. Alternatively spliced transcript variants varying in the 5' UTR, but encoding the same protein, have been found for this gene. A pseudogene of this gene is found on chromosome 11.

## Immunogen information

### Gene ID:

5357

### Uniprot

Q14651

### Synonyms:

PLS1; plastin-1

## Antibody Information

### Recommended dilutions:

WB 1:200 - 1:2000 IHC 1:50 - 1:200

### Source:

Rabbit

### Isotype:

IgG

### Purification:

Affinity purification

### Immunogen:

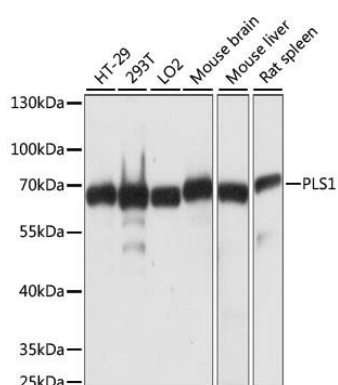
Recombinant fusion protein containing a sequence corresponding to amino acids 1-110 of human PLS1 (NP\_001165783.1).

### Storage:

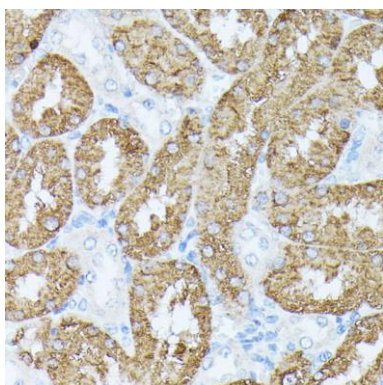
Store at -20°C. Avoid freeze / thaw cycles. Buffer: PBS with 0.02% sodium azide, 50% glycerol, pH7.3.

## Product Images

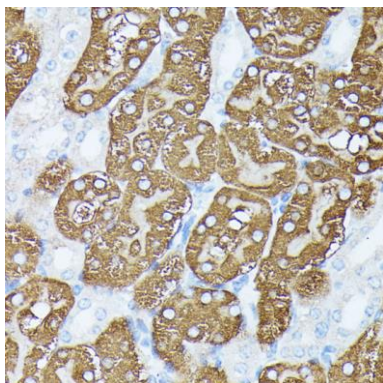
---



Western blot analysis of extracts of various cell lines, using PLS1 antibody (CAB15303) at 1:1000 dilution. Secondary antibody: HRP Goat Anti-Rabbit IgG (H+L) (CABS014) at 1:10000 dilution. Lysates/proteins: 25ug per lane. Blocking buffer: 3% nonfat dry milk in TBST. Detection: ECL Basic Kit (CABM00020). Exposure time: 3s.



Immunohistochemistry of paraffin-embedded rat kidney using PLS1 antibody (CAB15303) at dilution of 1:100 (40x lens).



Immunohistochemistry of paraffin-embedded mouse kidney using PLS1 antibody (CAB15303) at dilution of 1:100 (40x lens).