

# RABGGTB Rabbit Polyclonal Antibody



**CAB15310**

---

## Product Information

### Size:

20uL, 50uL, 100uL, 200uL

### Observed MW:

37kDa

### Calculated MW:

36kDa

### Applications:

WB IHC

### Reactivity:

Human, Mouse, Rat

## Protein Background

This gene encodes the beta-subunit of the enzyme Rab geranylgeranyl-transferase (RabGGTase), which belongs to the protein prenyltransferase family. RabGGTase catalyzes the post-translational addition of geranylgeranyl groups to C-terminal cysteine residues of Rab GTPases. Three small nucleolar RNA genes are present in the intronic regions of this gene. Alternately spliced transcript variants have been observed for this gene. A pseudogene associated with this gene is located on chromosome 3.

## Immunogen information

### Gene ID:

5876

### Uniprot

P53611

### Synonyms:

RABGGTB; GGTB

## Antibody Information

### Recommended dilutions:

WB 1:200 - 1:2000 IHC 1:50 - 1:200

### Source:

Rabbit

### Isotype:

IgG

### Purification:

Affinity purification

### Immunogen:

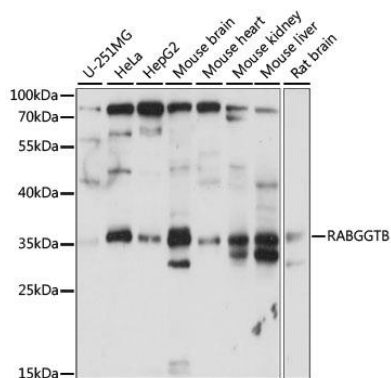
Recombinant fusion protein containing a sequence corresponding to amino acids 1-331 of human RABGGTB (NP\_004573.2).

### Storage:

Store at -20°C. Avoid freeze / thaw cycles. Buffer: PBS with 0.02% sodium azide, 50% glycerol, pH7.3.

## Product Images

---



Western blot analysis of extracts of various cell lines, using RABGGTB antibody (CAB15310) at 1:1000 dilution. Secondary antibody: HRP Goat Anti-Rabbit IgG (H+L) (CABS014) at 1:10000 dilution. Lysates/proteins: 25ug per lane. Blocking buffer: 3% nonfat dry milk in TBST. Detection: ECL Basic Kit (CABM00020). Exposure time: 30s.