

RFX3 Rabbit Polyclonal Antibody



CAB15311

Product Information

Size:

20uL, 50uL, 100uL, 200uL

Observed MW:

84kDa

Calculated MW:

45kDa/79kDa/83kDa

Applications:

WB

Reactivity:

Human

Antibody Information

Recommended dilutions:

WB 1:200 - 1:2000

Source:

Rabbit

Isotype:

IgG

Purification:

Affinity purification

Protein Background

This gene is a member of the regulatory factor X gene family, which encodes transcription factors that contain a highly-conserved winged helix DNA binding domain. The protein encoded by this gene is structurally related to regulatory factors X1, X2, X4, and X5. It is a transcriptional activator that can bind DNA as a monomer or as a heterodimer with other RFX family members. Multiple transcript variants encoding different isoforms have been described for this gene.

Immunogen information

Gene ID:

5991

Uniprot

P48380

Synonyms:

RFX3

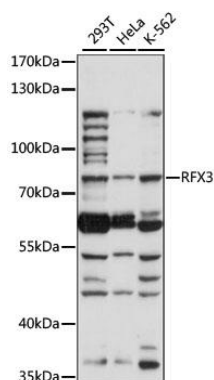
Immunogen:

Recombinant fusion protein containing a sequence corresponding to amino acids 280-430 of human RFX3 (NP_602304.1).

Storage:

Store at -20°C. Avoid freeze / thaw cycles. Buffer: PBS with 0.02% sodium azide, 50% glycerol, pH7.3.

Product Images



Western blot analysis of extracts of various cell lines, using RFX3 antibody (CAB15311) at 1:1000 dilution. Secondary antibody: HRP Goat Anti-Rabbit IgG (H+L) (CABS014) at 1:10000 dilution. Lysates/proteins: 25ug per lane. Blocking buffer: 3% nonfat dry milk in TBST. Detection: ECL Basic Kit (CABM00020). Exposure time: 90s.