

ROBO1 Rabbit Polyclonal Antibody



CAB15313

Product Information

Size:

20uL, 50uL, 100uL, 200uL

Observed MW:

270kDa

Calculated MW:

169kDa/175kDa/176kDa/180kDa/181kDa

Applications:

WB IHC IF

Reactivity:

Human, Mouse, Rat

Antibody Information

Recommended dilutions:

WB 1:200 - 1:2000 IHC 1:50
- 1:200 IF 1:50 - 1:200

Source:

Rabbit

Isotype:

IgG

Purification:

Affinity purification

Protein Background

Bilateral symmetric nervous systems have special midline structures that establish a partition between the two mirror image halves. Some axons project toward and across the midline in response to long-range chemoattractants emanating from the midline. The product of this gene is a member of the immunoglobulin gene superfamily and encodes an integral membrane protein that functions in axon guidance and neuronal precursor cell migration. This receptor is activated by SLIT-family proteins, resulting in a repulsive effect on glioma cell guidance in the developing brain. A related gene is located at an adjacent region on chromosome 3. Multiple transcript variants encoding different isoforms have been found for this gene.

Immunogen information

Gene ID:

6091

Uniprot

Q9Y6N7

Synonyms:

ROBO1; DUTT1; SAX3

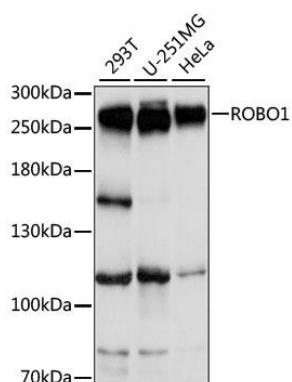
Immunogen:

Recombinant fusion protein containing a sequence corresponding to amino acids 1452-1651 of human ROBO1 (NP_002932.1).

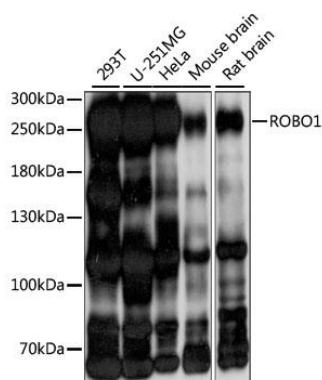
Storage:

Store at -20°C. Avoid freeze / thaw cycles. Buffer: PBS with 0.02% sodium azide, 50% glycerol, pH7.3.

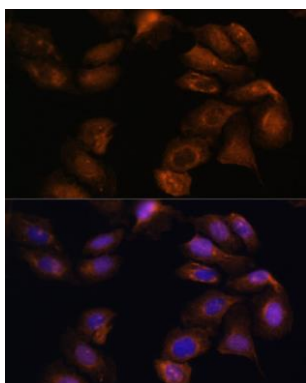
Product Images



Western blot analysis of extracts of various cell lines, using ROBO1 antibody (CAB15313) at 1:1000 dilution. Secondary antibody: HRP Goat Anti-Rabbit IgG (H+L) (CABS014) at 1:10000 dilution. Lysates/proteins: 25ug per lane. Blocking buffer: 3% nonfat dry milk in TBST. Detection: ECL Basic Kit (CABM00020). Exposure time: 3s.



Western blot analysis of extracts of various cell lines, using ROBO1 antibody (CAB15313) at 1:1000 dilution. Secondary antibody: HRP Goat Anti-Rabbit IgG (H+L) (CABS014) at 1:10000 dilution. Lysates/proteins: 25ug per lane. Blocking buffer: 3% nonfat dry milk in TBST. Detection: ECL Basic Kit (CABM00020). Exposure time: 10s.



Immunofluorescence analysis of U-2 OS cells using ROBO1 Polyclonal Antibody (CAB15313) at dilution of 1:100 (40x lens). Blue: DAPI for nuclear staining.