

# S100A8 Rabbit Polyclonal Antibody



CAB15315

## Product Information

### Size:

20uL, 50uL, 100uL, 200uL

### Observed MW:

11kDa

### Calculated MW:

10kDa

### Applications:

WB IHC IF

### Reactivity:

Human, Mouse, Rat

## Antibody Information

### Recommended dilutions:

WB 1:500 - 1:2000 IHC 1:50  
- 1:100 IF 1:50 - 1:100

### Source:

Rabbit

### Isotype:

IgG

### Purification:

Affinity purification

## Protein Background

The protein encoded by this gene is a member of the S100 family of proteins containing 2 EF-hand calcium-binding motifs. S100 proteins are localized in the cytoplasm and/or nucleus of a wide range of cells, and involved in the regulation of a number of cellular processes such as cell cycle progression and differentiation. S100 genes include at least 13 members which are located as a cluster on chromosome 1q21. This protein may function in the inhibition of casein kinase and as a cytokine. Altered expression of this protein is associated with the disease cystic fibrosis. Multiple transcript variants encoding different isoforms have been found for this gene.

## Immunogen information

### Gene ID:

6279

### Uniprot

P05109

### Synonyms:

S100A8; 60B8AG; CAGA; CFAG; CGLA; CP-10; L1Ag; MA387; MIF; MRP8; NIF; P8

### Immunogen:

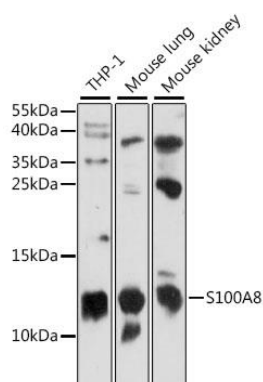
Recombinant fusion protein containing a sequence corresponding to amino acids 1-93 of human S100A8 (NP\_002955.2).

### Storage:

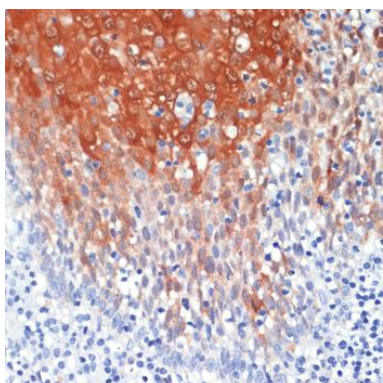
Store at -20°C. Avoid freeze / thaw cycles. Buffer: PBS with 0.02% sodium azide, 50% glycerol, pH7.3.

## Product Images

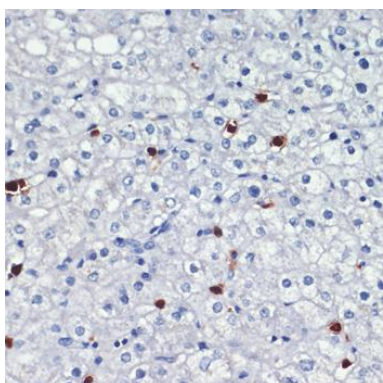
---



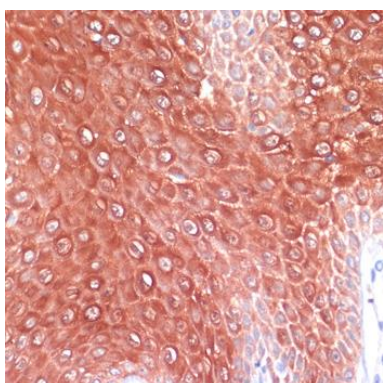
Western blot analysis of extracts of various cell lines, using S100A8 antibody (CAB15315) at 1:1000 dilution. Secondary antibody: HRP Goat Anti-Rabbit IgG (H+L) (CABS014) at 1:10000 dilution. Lysates/proteins: 25ug per lane. Blocking buffer: 3% nonfat dry milk in TBST. Detection: ECL Enhanced Kit (CABM00021). Exposure time: 90s.



Immunohistochemistry of paraffin-embedded human tonsil using S100A8 antibody (CAB15315) at dilution of 1:200 (40x lens).



Immunohistochemistry of paraffin-embedded human liver using S100A8 antibody (CAB15315) at dilution of 1:200 (40x lens).



Immunohistochemistry of paraffin-embedded human skin using S100A8 antibody (CAB15315) at dilution of 1:200 (40x lens).