

# CCL16 Rabbit Polyclonal Antibody



CAB15317

## Product Information

### Size:

20uL, 50uL, 100uL, 200uL

### Observed MW:

14kDa

### Calculated MW:

13kDa

### Applications:

WB

### Reactivity:

Rat

## Protein Background

This gene is one of several cytokine genes clustered on the q-arm of chromosome 17. Cytokines are a family of secreted proteins involved in immunoregulatory and inflammatory processes. The CC cytokines are proteins characterized by two adjacent cysteines. The cytokine encoded by this gene displays chemotactic activity for lymphocytes and monocytes but not for neutrophils. This cytokine also shows a potent myelosuppressive activity and suppresses proliferation of myeloid progenitor cells. The expression of this gene is upregulated by IL-10.

## Immunogen information

### Gene ID:

6360

### Uniprot

O15467

### Synonyms:

CCL16; CKb12; HCC-4; ILINCK; LCC-1; LEC; LMC; Mtn-1; NCC-4; NCC4; SCYA16; SCYL4

## Antibody Information

### Recommended dilutions:

WB 1:200 - 1:2000

### Source:

Rabbit

### Isotype:

IgG

### Purification:

Affinity purification

### Immunogen:

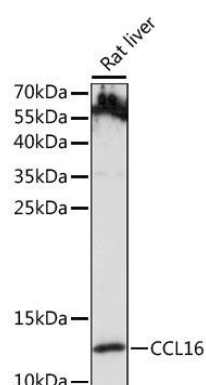
Recombinant fusion protein containing a sequence corresponding to amino acids 1-120 of human CCL16 (NP\_004581.1).

### Storage:

Store at -20°C. Avoid freeze / thaw cycles. Buffer: PBS with 0.02% sodium azide, 50% glycerol, pH7.3.

## Product Images

---



Western blot analysis of extracts of Rat liver, using CCL16 antibody (CAB15317) at 1:1000 dilution. Secondary antibody: HRP Goat Anti-Rabbit IgG (H+L) (CABS014) at 1:10000 dilution. Lysates/proteins: 25ug per lane. Blocking buffer: 3% nonfat dry milk in TBST. Detection: ECL Basic Kit (CABM00020). Exposure time: 90s.