

XPNPEP1 Rabbit Polyclonal Antibody



CAB15326

Product Information

Size:

20uL, 50uL, 100uL, 200uL

Observed MW:

70-85kDa

Calculated MW:

67kDa/69kDa/72kDa/74kDa

Applications:

WB

Reactivity:

Human, Rat

Protein Background

This gene encodes the cytosolic form of a metalloaminopeptidase that catalyzes the cleavage of the N-terminal amino acid adjacent to a proline residue. The gene product may play a role in degradation and maturation of tachykinins, neuropeptides, and peptide hormones. Alternative splicing results in multiple transcript variants.

Immunogen information

Gene ID:

7511

Uniprot

Q9NQW7

Synonyms:

XPNPEP1; APP1; SAMP; XPNPEP; XPNPEPL; XPNPEPL1

Antibody Information

Recommended dilutions:

WB 1:200 - 1:2000

Source:

Rabbit

Isotype:

IgG

Purification:

Affinity purification

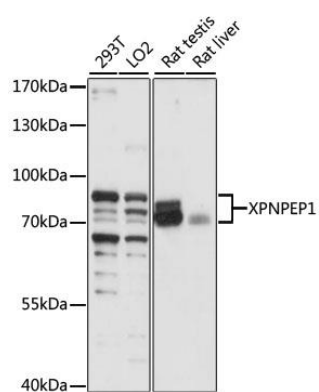
Immunogen:

Recombinant fusion protein containing a sequence corresponding to amino acids 44-240 of human XPNPEP1 (NP_065116.3).

Storage:

Store at -20°C. Avoid freeze / thaw cycles. Buffer: PBS with 0.02% sodium azide, 50% glycerol, pH7.3.

Product Images



Western blot analysis of extracts of various cell lines, using XPNPEP1 antibody (CAB15326) at 1:1000 dilution. Secondary antibody: HRP Goat Anti-Rabbit IgG (H+L) (CABS014) at 1:10000 dilution. Lysates/proteins: 25ug per lane. Blocking buffer: 3% nonfat dry milk in TBST. Detection: ECL Basic Kit (CABM00020). Exposure time: 5s.