

RNF112 Rabbit Polyclonal Antibody



CAB15333

Product Information

Size:

20uL, 50uL, 100uL, 200uL

Observed MW:

68KDa

Calculated MW:

68kDa

Applications:

WB IHC IF

Reactivity:

Human, Mouse, Rat

Protein Background

This gene encodes a member of the RING finger protein family of transcription factors. The protein is primarily expressed in brain. The gene is located within the Smith-Magenis syndrome region on chromosome 17.

Immunogen information

Gene ID:

7732

Uniprot

Q9ULX5

Synonyms:

RNF112; BFP; ZNF179

Antibody Information

Recommended dilutions:

WB 1:200 - 1:2000 IHC 1:50
- 1:200 IF 1:50 - 1:200

Source:

Rabbit

Isotype:

IgG

Purification:

Affinity purification

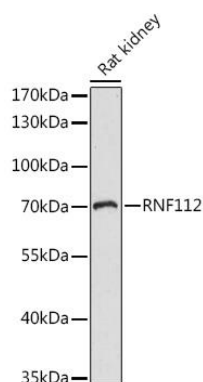
Immunogen:

Recombinant fusion protein containing a sequence corresponding to amino acids 200-500 of human RNF112 (NP_009079.2).

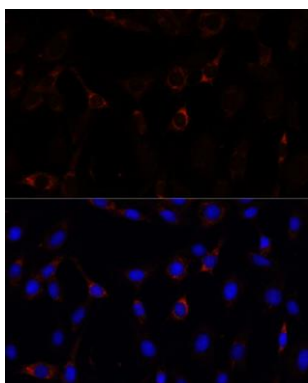
Storage:

Store at -20°C. Avoid freeze / thaw cycles. Buffer: PBS with 0.02% sodium azide, 50% glycerol, pH7.3.

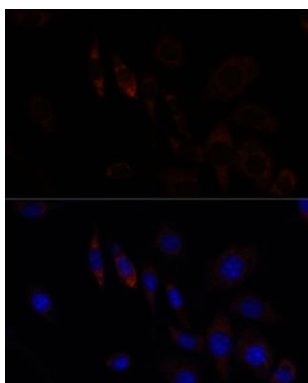
Product Images



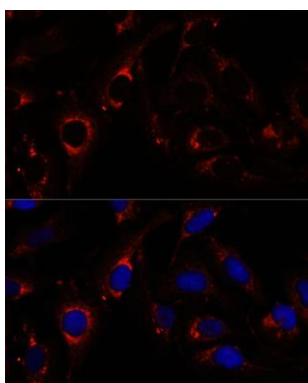
Western blot analysis of extracts of Rat kidney, using RNF112 antibody (CAB15333) at 1:1000 dilution. Secondary antibody: HRP Goat Anti-Rabbit IgG (H+L) (CABS014) at 1:10000 dilution. Lysates/proteins: 25ug per lane. Blocking buffer: 3% nonfat dry milk in TBST. Detection: ECL Basic Kit (CABM00020). Exposure time: 60s.



Immunofluorescence analysis of C6 cells using RNF112 antibody (CAB15333) at dilution of 1:100. Blue: DAPI for nuclear staining.



Immunofluorescence analysis of L929 cells using RNF112 antibody (CAB15333) at dilution of 1:100. Blue: DAPI for nuclear staining.



Immunofluorescence analysis of U-2 OS cells using RNF112 antibody (CAB15333) at dilution of 1:100. Blue: DAPI for nuclear staining.