

PSMG1 Rabbit Polyclonal Antibody



CAB15339

Product Information

Size:

20uL, 50uL, 100uL, 200uL

Observed MW:

33kDa

Calculated MW:

30kDa/32kDa

Applications:

WB IHC

Reactivity:

Human, Mouse, Rat

Antibody Information

Recommended dilutions:

WB 1:200 - 1:2000 IHC 1:50
- 1:200

Source:

Rabbit

Isotype:

IgG

Purification:

Affinity purification

Protein Background

Immunogen information

Gene ID:

8624

Uniprot

O95456

Synonyms:

PSMG1; C21LRP; DSCR2; LRPC21; PAC-1; PAC1

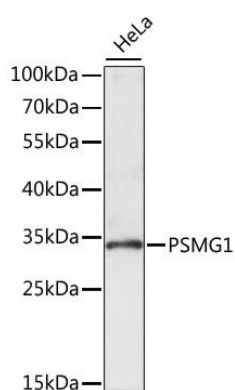
Immunogen:

Recombinant fusion protein containing a sequence corresponding to amino acids 1-288 of human PSMG1 (NP_003711.1).

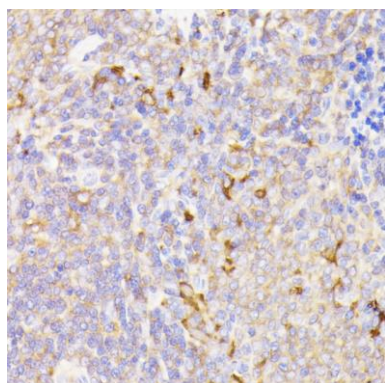
Storage:

Store at -20°C. Avoid freeze / thaw cycles. Buffer: PBS with 0.02% sodium azide, 50% glycerol, pH7.3.

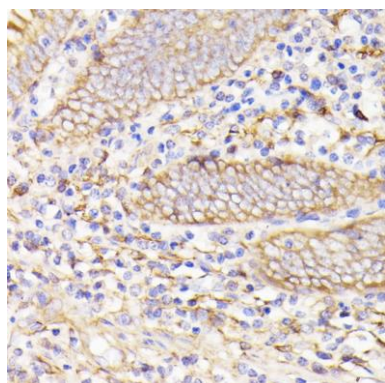
Product Images



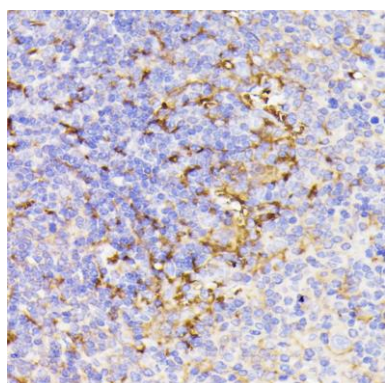
Western blot analysis of extracts of HeLa cells, using PSMG1 antibody (CAB15339) at 1:1000 dilution. Secondary antibody: HRP Goat Anti-Rabbit IgG (H+L) (CABS014) at 1:10000 dilution. Lysates/proteins: 25ug per lane. Blocking buffer: 3% nonfat dry milk in TBST. Detection: ECL Enhanced Kit (CABM00021). Exposure time: 5s.



Immunohistochemistry of paraffin-embedded rat spleen using PSMG1 antibody (CAB15339) at dilution of 1:100 (40x lens).



Immunohistochemistry of paraffin-embedded human appendix using PSMG1 antibody (CAB15339) at dilution of 1:100 (40x lens).



Immunohistochemistry of paraffin-embedded mouse spleen using PSMG1 antibody (CAB15339) at dilution of 1:100 (40x lens).