

# MYH13 Rabbit Polyclonal Antibody



CAB15343

---

## Product Information

### Size:

20uL, 50uL, 100uL, 200uL

### Observed MW:

300kDa

### Calculated MW:

223kDa

### Applications:

WB

### Reactivity:

Human

## Antibody Information

### Recommended dilutions:

WB 1:200 - 1:2000

### Source:

Rabbit

### Isotype:

IgG

### Purification:

Affinity purification

## Protein Background

### Immunogen information

#### Gene ID:

544791

#### Uniprot

#### Synonyms:

MYH13; MyHC-III; MyHC-eo; myosin-13

#### Immunogen:

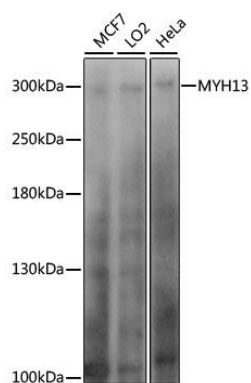
A synthetic peptide corresponding to a sequence within amino acids 550-650 of mouse MYH13 (NP\_001074719.1).

#### Storage:

Store at -20°C. Avoid freeze / thaw cycles. Buffer: PBS with 0.02% sodium azide, 50% glycerol, pH7.3.

## Product Images

---



Western blot analysis of extracts of various cell lines, using MYH13 antibody (CAB15343) at 1:1000 dilution. Secondary antibody: HRP Goat Anti-Rabbit IgG (H+L) (CABS014) at 1:10000 dilution. Lysates/proteins: 25ug per lane. Blocking buffer: 3% nonfat dry milk in TBST. Detection: ECL Basic Kit (CABM00020). Exposure time: 20s.