

MTMR4 Rabbit Polyclonal Antibody



CAB15349

Product Information

Size:

20uL, 50uL, 100uL, 200uL

Observed MW:

133kDa

Calculated MW:

133kDa

Applications:

WB IF

Reactivity:

Human, Mouse, Rat

Antibody Information

Recommended dilutions:

WB 1:200 - 1:2000 IF 1:50 - 1:200

Source:

Rabbit

Isotype:

IgG

Purification:

Affinity purification

Protein Background

Immunogen information

Gene ID:

9110

Uniprot

Q9NYA4

Synonyms:

MTMR4; FYVE-DSP2; ZFYVE11

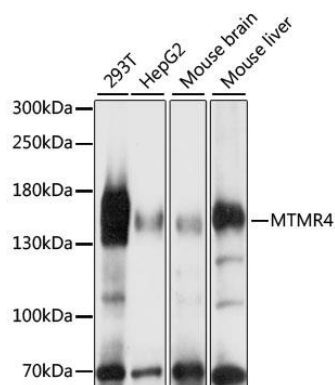
Immunogen:

Recombinant fusion protein containing a sequence corresponding to amino acids 920-1195 of human MTMR4 (NP_004678.3).

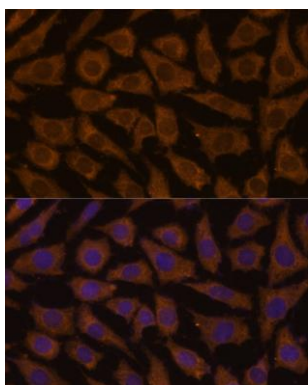
Storage:

Store at -20°C. Avoid freeze / thaw cycles. Buffer: PBS with 0.02% sodium azide, 50% glycerol, pH7.3.

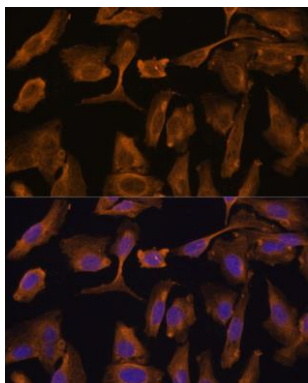
Product Images



Western blot analysis of extracts of various cell lines, using MTMR4 antibody (CAB15349) at 1:1000 dilution. Secondary antibody: HRP Goat Anti-Rabbit IgG (H+L) (CABS014) at 1:10000 dilution. Lysates/proteins: 25ug per lane. Blocking buffer: 3% nonfat dry milk in TBST. Detection: ECL Basic Kit (CABM00020). Exposure time: 60s.



Immunofluorescence analysis of L929 cells using MTMR4 Polyclonal Antibody (CAB15349) at dilution of 1:100 (40x lens). Blue: DAPI for nuclear staining.



Immunofluorescence analysis of U-2 OS cells using MTMR4 Polyclonal Antibody (CAB15349) at dilution of 1:100 (40x lens). Blue: DAPI for nuclear staining.