

# GTPBP1 Rabbit Polyclonal Antibody



CAB15359

---

## Product Information

### Size:

20uL, 50uL, 100uL, 200uL

### Observed MW:

72kDa

### Calculated MW:

72kDa

### Applications:

WB

### Reactivity:

Human, Mouse

## Protein Background

This gene is upregulated by interferon-gamma and encodes a protein that is a member of the AGP11/GTPBP1 family of GTP-binding proteins. A structurally similar protein has been found in mouse, where disruption of the gene for that protein had no observable phenotype.

## Immunogen information

### Gene ID:

9567

### Uniprot

O00178

### Synonyms:

GTPBP1; GP-1; GP1; HSPC018

## Antibody Information

### Recommended dilutions:

WB 1:200 - 1:2000

### Source:

Rabbit

### Isotype:

IgG

### Purification:

Affinity purification

### Immunogen:

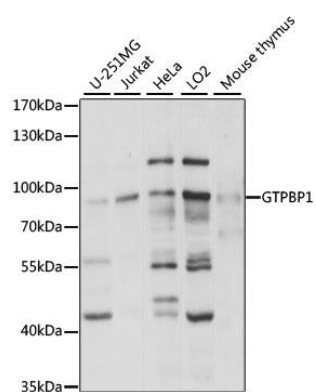
Recombinant fusion protein containing a sequence corresponding to amino acids 10-280 of human GTPBP1 (NP\_004277.2).

### Storage:

Store at -20°C. Avoid freeze / thaw cycles. Buffer: PBS with 0.02% sodium azide, 50% glycerol, pH7.3.

## Product Images

---



Western blot analysis of extracts of various cell lines, using GTPBP1 antibody (CAB15359) at 1:1000 dilution. Secondary antibody: HRP Goat Anti-Rabbit IgG (H+L) (CABS014) at 1:10000 dilution. Lysates/proteins: 25ug per lane. Blocking buffer: 3% nonfat dry milk in TBST. Detection: ECL Basic Kit (CABM00020). Exposure time: 3s.