

KIF20B Rabbit Polyclonal Antibody



CAB15360

Product Information

Size:

20uL, 50uL, 100uL, 200uL

Observed MW:

210kDa

Calculated MW:

59kDa/199kDa/206kDa/210kDa/214kDa

Applications:

WB IF

Reactivity:

Human, Mouse, Rat

Antibody Information

Recommended dilutions:

WB 1:200 - 1:2000 IF 1:50 - 1:200

Source:

Rabbit

Isotype:

IgG

Purification:

Affinity purification

Protein Background

Immunogen information

Gene ID:

9585

Uniprot

Q96Q89

Synonyms:

KIF20B; CT90; KRMP1; MPHOSPH1; MPP-1; MPP1

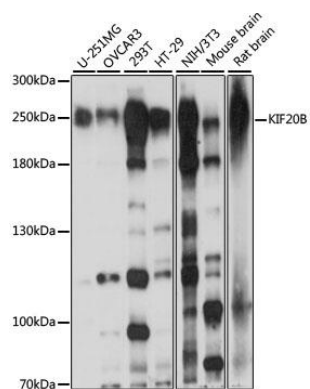
Immunogen:

Recombinant fusion protein containing a sequence corresponding to amino acids 1200-1500 of human KIF20B (NP_057279.2).

Storage:

Store at -20°C. Avoid freeze / thaw cycles. Buffer: PBS with 0.02% sodium azide, 50% glycerol, pH7.3.

Product Images



Western blot analysis of extracts of various cell lines, using KIF20B antibody (CAB15360) at 1:1000 dilution. Secondary antibody: HRP Goat Anti-Rabbit IgG (H+L) (CABS014) at 1:10000 dilution. Lysates/proteins: 25ug per lane. Blocking buffer: 3% nonfat dry milk in TBST. Detection: ECL Basic Kit (CABM00020). Exposure time: 10s.