

BMS1 Rabbit Polyclonal Antibody



CAB15367

Product Information

Size:

20uL, 50uL, 100uL, 200uL

Observed MW:

146kDa

Calculated MW:

145kDa

Applications:

WB IF

Reactivity:

Human, Mouse, Rat

Protein Background

This gene likely encodes a ribosome assembly protein. A similar protein in yeast functions in 35S-rRNA processing, which includes a series of cleavage steps critical for formation of 40S ribosomes. Related pseudogenes exist on chromosomes 2, 9, 10, 15, 16, and 22.

Immunogen information

Gene ID:

9790

Uniprot

Q14692

Synonyms:

BMS1; ACC; BMS1L

Antibody Information

Recommended dilutions:

WB 1:200 - 1:2000 IF 1:50 - 1:200

Source:

Rabbit

Isotype:

IgG

Purification:

Affinity purification

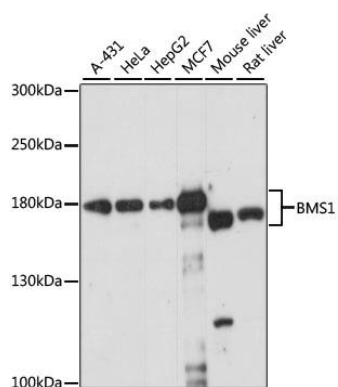
Immunogen:

Recombinant fusion protein containing a sequence corresponding to amino acids 600-900 of human BMS1 (NP_055568.3).

Storage:

Store at -20°C. Avoid freeze / thaw cycles. Buffer: PBS with 0.02% sodium azide, 50% glycerol, pH7.3.

Product Images



Western blot analysis of extracts of various cell lines, using BMS1 antibody (CAB15367) at 1:1000 dilution. Secondary antibody: HRP Goat Anti-Rabbit IgG (H+L) (CABS014) at 1:10000 dilution. Lysates/proteins: 25ug per lane. Blocking buffer: 3% nonfat dry milk in TBST. Detection: ECL Enhanced Kit (CABM00021). Exposure time: 15s.