

KIF20A Rabbit Polyclonal Antibody



CAB15377

Product Information

Size:

20uL, 50uL, 100uL, 200uL

Observed MW:

105kDa

Calculated MW:

98kDa/100kDa

Applications:

WB

Reactivity:

Human, Mouse, Rat

Antibody Information

Recommended dilutions:

WB 1:200 - 1:2000

Source:

Rabbit

Isotype:

IgG

Purification:

Affinity purification

Protein Background

Immunogen information

Gene ID:

10112

Uniprot

O95235

Synonyms:

KIF20A; MKLP2; RAB6KIFL

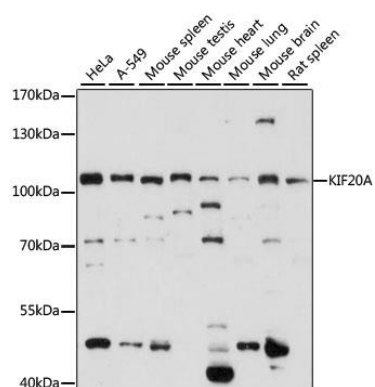
Immunogen:

Recombinant fusion protein containing a sequence corresponding to amino acids 591-890 of human KIF20A (NP_005724.1).

Storage:

Store at -20°C. Avoid freeze / thaw cycles. Buffer: PBS with 0.02% sodium azide, 50% glycerol, pH7.3.

Product Images



Western blot analysis of extracts of various cell lines, using KIF20A antibody (CAB15377) at 1:1000 dilution. Secondary antibody: HRP Goat Anti-Rabbit IgG (H+L) (CABS014) at 1:10000 dilution. Lysates/proteins: 25ug per lane. Blocking buffer: 3% nonfat dry milk in TBST. Detection: ECL Basic Kit (CABM00020). Exposure time: 15s.