

SUGP2 Rabbit Polyclonal Antibody



CAB15378

Product Information

Size:

20uL, 50uL, 100uL, 200uL

Observed MW:

131kDa

Calculated MW:

115kDa/116kDa/120kDa

Applications:

WB

Reactivity:

Human, Mouse

Protein Background

This gene encodes a member of the arginine/serine-rich family of splicing factors. The encoded protein functions in mRNA processing. Alternatively spliced transcript variants have been described.

Immunogen information

Gene ID:

10147

Uniprot

Q8IX01

Synonyms:

SUGP2; SFRS14

Antibody Information

Recommended dilutions:

WB 1:200 - 1:2000

Source:

Rabbit

Isotype:

IgG

Purification:

Affinity purification

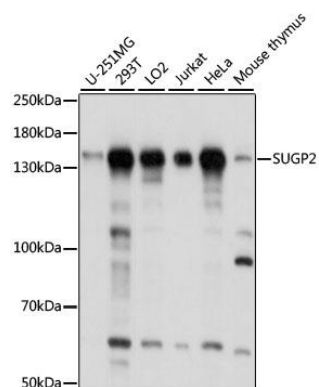
Immunogen:

Recombinant fusion protein containing a sequence corresponding to amino acids 500-700 of human SUGP2 (NP_055699.2).

Storage:

Store at -20°C. Avoid freeze / thaw cycles. Buffer: PBS with 0.02% sodium azide, 50% glycerol, pH7.3.

Product Images



Western blot analysis of extracts of various cell lines, using SUGP2 antibody (CAB15378) at 1:1000 dilution. Secondary antibody: HRP Goat Anti-Rabbit IgG (H+L) (CABS014) at 1:10000 dilution. Lysates/proteins: 25ug per lane. Blocking buffer: 3% nonfat dry milk in TBST. Detection: ECL Basic Kit (CABM00020). Exposure time: 5s.