

# PRG4 Rabbit Polyclonal Antibody



CAB15379

---

## Product Information

### Size:

20uL, 50uL, 100uL, 200uL

### Observed MW:

150kDa

### Calculated MW:

102kDa/136kDa/141kDa/146kDa/151kDa

### Applications:

WB

### Reactivity:

Human, Rat

## Protein Background

The protein encoded by this gene is a large proteoglycan that is synthesized by chondrocytes located at the surface of articular cartilage and by some synovial lining cells. This protein contains both chondroitin sulfate and keratan sulfate glycosaminoglycans. It functions as a boundary lubricant at the cartilage surface and contributes to the elastic absorption and energy dissipation of synovial fluid. Mutations in this gene result in camptodactyly-arthropathy-coxa vara-pericarditis syndrome. Alternative splicing results in multiple transcript variants.

## Immunogen information

### Gene ID:

10216

### Uniprot

Q92954

### Synonyms:

PRG4; CACP; HAPO; JCAP; MSF; SZP

## Antibody Information

### Recommended dilutions:

WB 1:200 - 1:2000

### Source:

Rabbit

### Isotype:

IgG

### Purification:

Affinity purification

### Immunogen:

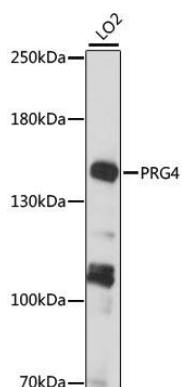
Recombinant fusion protein containing a sequence corresponding to amino acids 1264-1363 of human PRG4 (NP\_001121180.2).

### Storage:

Store at -20°C. Avoid freeze / thaw cycles. Buffer: PBS with 0.02% sodium azide, 50% glycerol, pH7.3.

## Product Images

---



Western blot analysis of extracts of LO2 cells, using PRG4 antibody (CAB15379) at 1:1000 dilution. Secondary antibody: HRP Goat Anti-Rabbit IgG (H+L) (CABS014) at 1:10000 dilution. Lysates/proteins: 25ug per lane. Blocking buffer: 3% nonfat dry milk in TBST. Detection: ECL Basic Kit (CABM00020). Exposure time: 10s.