

# TCIRG1 Rabbit Polyclonal Antibody



CAB15382

## Product Information

### Size:

20uL, 50uL, 100uL, 200uL

### Observed MW:

93kDa

### Calculated MW:

68kDa/92kDa

### Applications:

WB IHC IF

### Reactivity:

Human, Mouse, Rat

## Antibody Information

### Recommended dilutions:

WB 1:200 - 1:2000 IHC 1:50  
- 1:200 IF 1:50 - 1:200

### Source:

Rabbit

### Isotype:

IgG

### Purification:

Affinity purification

## Protein Background

This gene encodes a subunit of a large protein complex known as a vacuolar H<sup>+</sup>-ATPase (V-ATPase). The protein complex acts as a pump to move protons across the membrane. This movement of protons helps regulate the pH of cells and their surrounding environment. V-ATPase dependent organelle acidification is necessary for such intracellular processes as protein sorting, zymogen activation, and receptor-mediated endocytosis. V-ATPase is comprised of a cytosolic V1 domain and a transmembrane V0 domain. Alternative splicing results in multiple transcript variants. Mutations in this gene are associated with infantile malignant osteopetrosis.

## Immunogen information

### Gene ID:

10312

### Uniprot

Q13488

### Synonyms:

TCIRG1; ATP6N1C; ATP6V0A3; Atp6i; OC-116kDa; OC116; OPTB1; Stv1; TIRC7; Vph1; a3

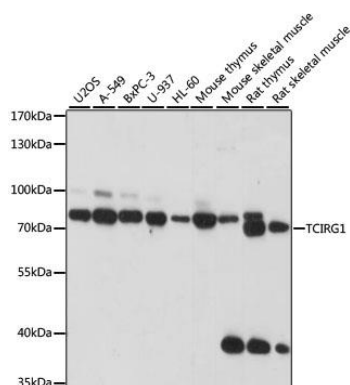
### Immunogen:

Recombinant fusion protein containing a sequence corresponding to amino acids 1-130 of human TCIRG1 (NP\_006010.2).

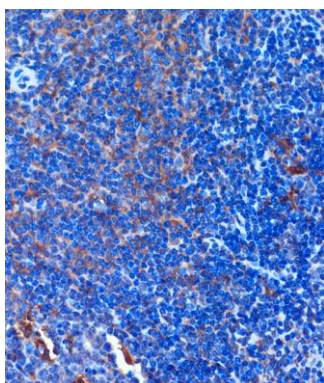
### Storage:

Store at -20°C. Avoid freeze / thaw cycles. Buffer: PBS with 0.02% sodium azide, 50% glycerol, pH7.3.

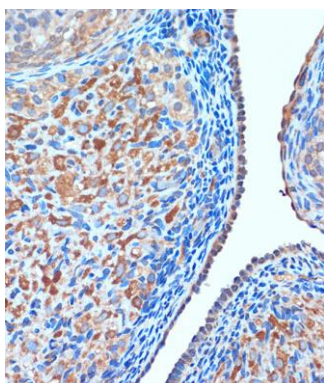
## Product Images



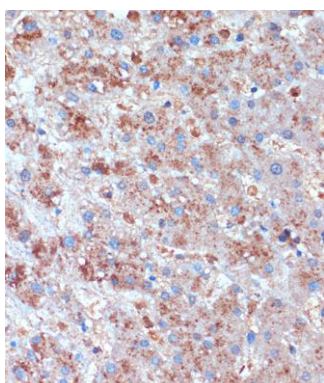
Western blot analysis of extracts of various cell lines, using TCIRG1 antibody (CAB15382) at 1:1000 dilution. Secondary antibody: HRP Goat Anti-Rabbit IgG (H+L) (CABS014) at 1:10000 dilution. Lysates/proteins: 25ug per lane. Blocking buffer: 3% nonfat dry milk in TBST. Detection: ECL Basic Kit (CABM00020). Exposure time: 30s.



Immunohistochemistry of paraffin-embedded Mouse spleen using TCIRG1 Rabbit pAb (CAB15382) at dilution of 1:100 (40x lens).



Immunohistochemistry of paraffin-embedded Rat ovary using TCIRG1 Rabbit pAb (CAB15382) at dilution of 1:100 (40x lens).



Immunohistochemistry of paraffin-embedded Human liver using TCIRG1 Rabbit pAb (CAB15382) at dilution of 1:100 (40x lens).