

SEMA3C Rabbit Polyclonal Antibody



CAB15386

Product Information

Size:

20uL, 50uL, 100uL, 200uL

Observed MW:

85kDa

Calculated MW:

26kDa/85kDa

Applications:

WB IF

Reactivity:

Mouse, Rat

Antibody Information

Recommended dilutions:

WB 1:200 - 1:2000 IF 1:50 - 1:200

Source:

Rabbit

Isotype:

IgG

Purification:

Affinity purification

Protein Background

Immunogen information

Gene ID:

10512

Uniprot

Q99985

Synonyms:

SEMA3C; SEMAE; SemE

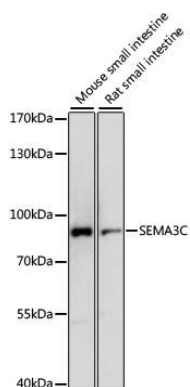
Immunogen:

Recombinant fusion protein containing a sequence corresponding to amino acids 21-330 of human SEMA3C (NP_006370.1).

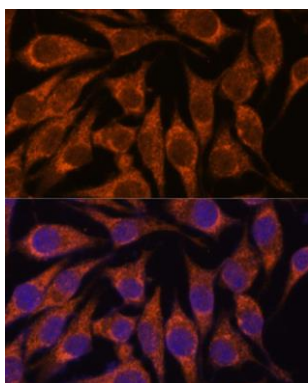
Storage:

Store at -20°C. Avoid freeze / thaw cycles. Buffer: PBS with 0.02% sodium azide, 50% glycerol, pH7.3.

Product Images



Western blot analysis of extracts of various cell lines, using SEMA3C antibody (CAB15386) at 1:1000 dilution. Secondary antibody: HRP Goat Anti-Rabbit IgG (H+L) (CABS014) at 1:10000 dilution. Lysates/proteins: 25ug per lane. Blocking buffer: 3% nonfat dry milk in TBST. Detection: ECL Basic Kit (CABM00020). Exposure time: 10s.



Immunofluorescence analysis of L929 cells using SEMA3C antibody (CAB15386) at dilution of 1:100. Blue: DAPI for nuclear staining.