

OLFM4 Rabbit Polyclonal Antibody



CAB15387

Product Information

Size:

20uL, 50uL, 100uL, 200uL

Observed MW:

75-80KDa

Calculated MW:

57kDa

Applications:

WB

Reactivity:

Human, Mouse, Rat

Protein Background

This gene was originally cloned from human myeloblasts and found to be selectively expressed in inflamed colonic epithelium. This gene encodes a member of the olfactomedin family. The encoded protein is an antiapoptotic factor that promotes tumor growth and is an extracellular matrix glycoprotein that facilitates cell adhesion.

Immunogen information

Gene ID:

10562

Uniprot

Q6UX06

Synonyms:

OLFM4; GC1; GW112; OLM4; OlfD; UNQ362; bA209J19.1; hGC-1; hOLfD

Antibody Information

Recommended dilutions:

WB 1:200 - 1:2000

Source:

Rabbit

Isotype:

IgG

Purification:

Affinity purification

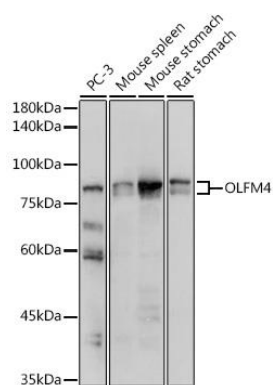
Immunogen:

Recombinant fusion protein containing a sequence corresponding to amino acids 211-510 of human OLFM4 (NP_006409.3).

Storage:

Store at -20°C. Avoid freeze / thaw cycles. Buffer: PBS with 0.02% sodium azide, 50% glycerol, pH7.3.

Product Images



Western blot analysis of extracts of various cell lines, using OLFM4 antibody (CAB15387) at 1:1000 dilution. Secondary antibody: HRP Goat Anti-Rabbit IgG (H+L) (CABS014) at 1:10000 dilution. Lysates/proteins: 25ug per lane. Blocking buffer: 3% nonfat dry milk in TBST. Detection: ECL Basic Kit (CABM00020). Exposure time: 3s.